

CuteRecovery

User Guide



The information in this document is subject to change without notice. This document is not warranted to be error free.

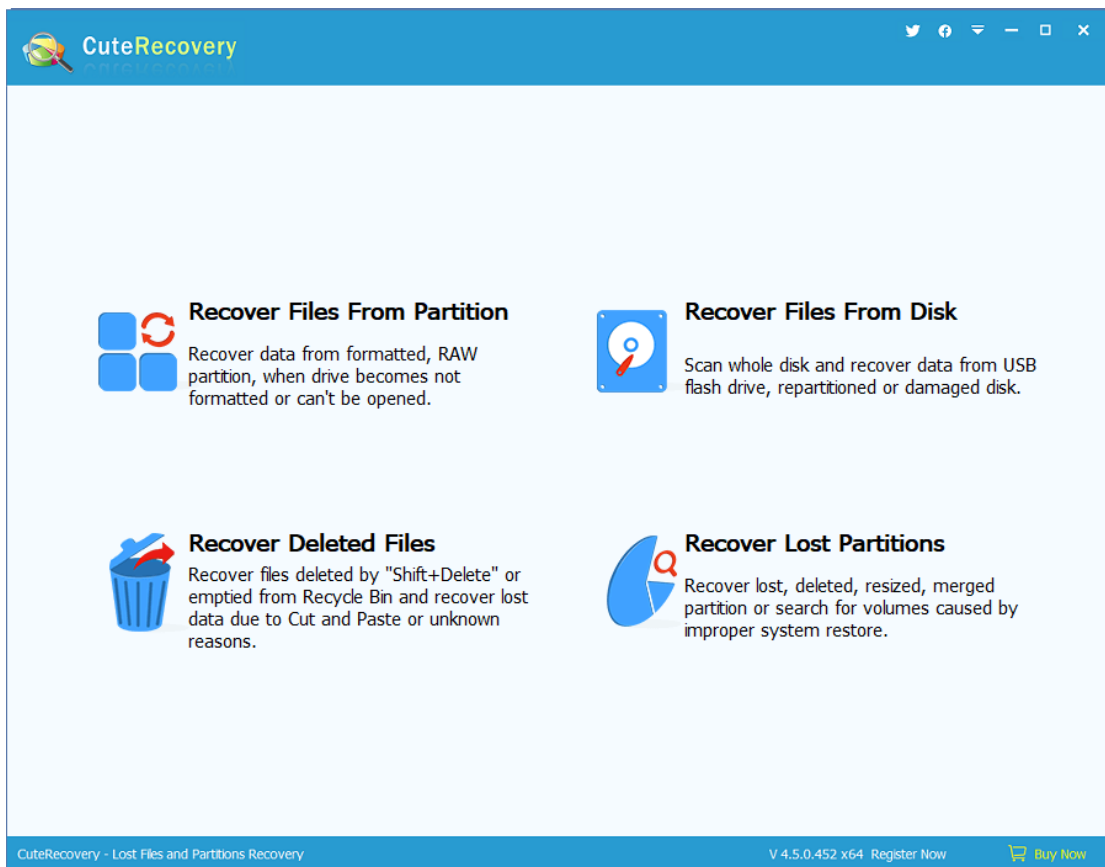
CONTENTS

Introduction.....	3
Main Screen.....	5
Deleted File Recovery	7
Whole Partition File Recovery	18
Whole Disk Recovery	29
Lost Partition Recovery.....	38
Recover Files By Type.....	47
Recovered File Preview.....	52
Copy Files by Context Menu	58
Register CuteRecovery.....	63
CuteRecovery End User License Agreement	69
Technical Support.....	73

Introduction

CuteRecovery is powerful and easy-to-use data recovery software which can recover lost files or partitions quickly; CuteRecovery is especially easy to use, and you can learn it in minutes.

CuteRecovery can recover lost partitions, deleted files, formatted partitions and it also applies to other partition damage cases. It supports IDE, SCSI, SATA, RAID, all kinds of USB flash disks, memory cards of camera and cellphones, etc.; besides, it supports FAT12, FAT16, FAT32, exFAT and NTFS file system.



Main Features:

1. It supports to recover lost or deleted partitions (partition table). During the recovery process, you can see files of partition it finds out so that you can judge whether the partition is the one you need, and at the same time you can recover these files without saving partition table.
2. It supports to recover deleted files. Deleted files can be recovered as long as they are not overwritten.
3. It supports to recover files from damaged/RAW/formatted/corrupted partitions. A partition may become inaccessible due to improper actions, virus, sudden power failure, etc.
4. It supports to recover files via scanning the entire disk. This function applies to the situation that partitions on the disk are badly damaged and cannot be recovered directly.
5. It supports both MBR partition table and GUID partition table (GPT disk).

Technical Specification

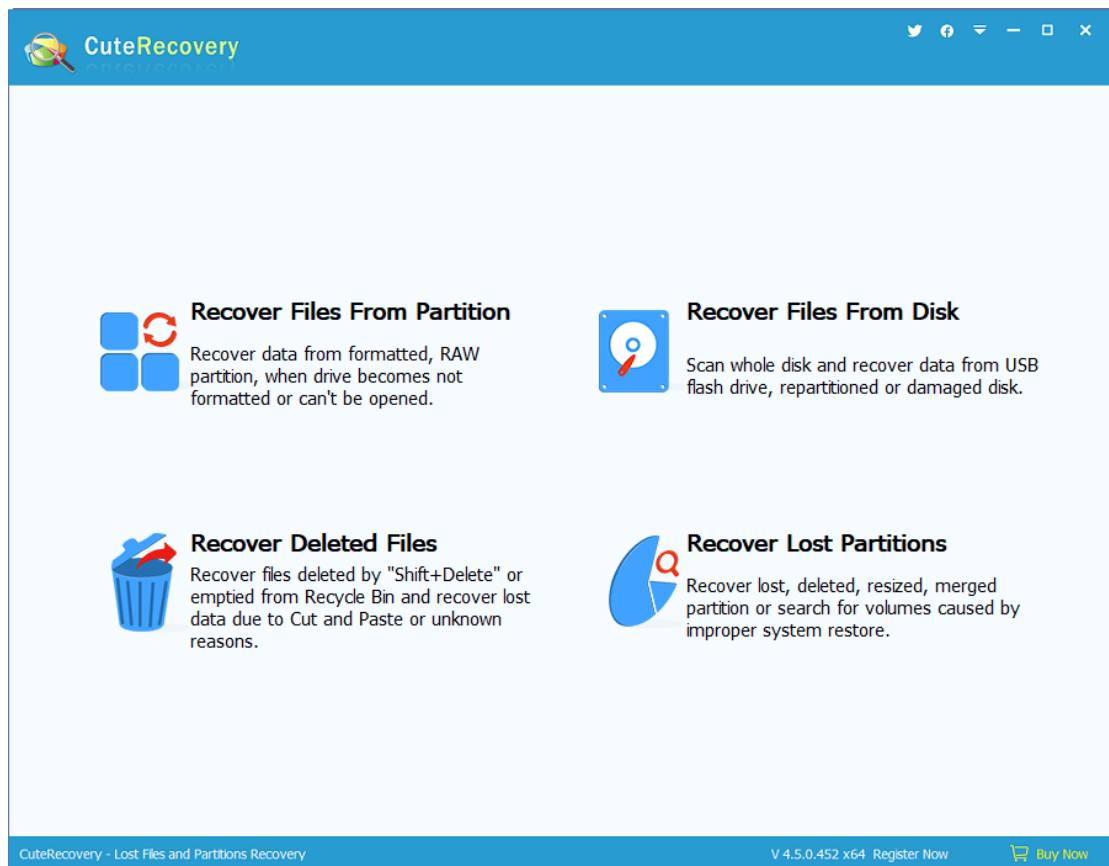
Recommended Hardware requirement: 1 GHz x86 or compatible CPU, 1GB RAM memory, mouse, and keyboard.

Supported file system: FAT12, FAT16, FAT32, exFAT, and NTFS.

Supported operating systems: Windows XP/Vista/7/8/8.1/10/11, both 32bit and 64bit.

Main Screen

The main interface of CuteRecovery is shown as below. There are four buttons on the interface, and each represents a data recovery mode.



Click "[Recover Files From Partition](#)" and CuteRecovery will recover files from the specific partition. It scans the whole partition and then displays all files it finds out. This function is used when the partition is formatted or becomes "RAW (The disk in drive is not formatted. Do you want to format it now)" or partition cannot be opened.

Click "[Recover Lost Partitions](#)" and CuteRecovery will start to recover lost or deleted partitions and repair partition table. This function is applied when partition is lost or deleted or the partition is lost caused by incorrect Ghost operations, disk repartition, etc. It's able to recover entire partition directly without copying files to other disks.

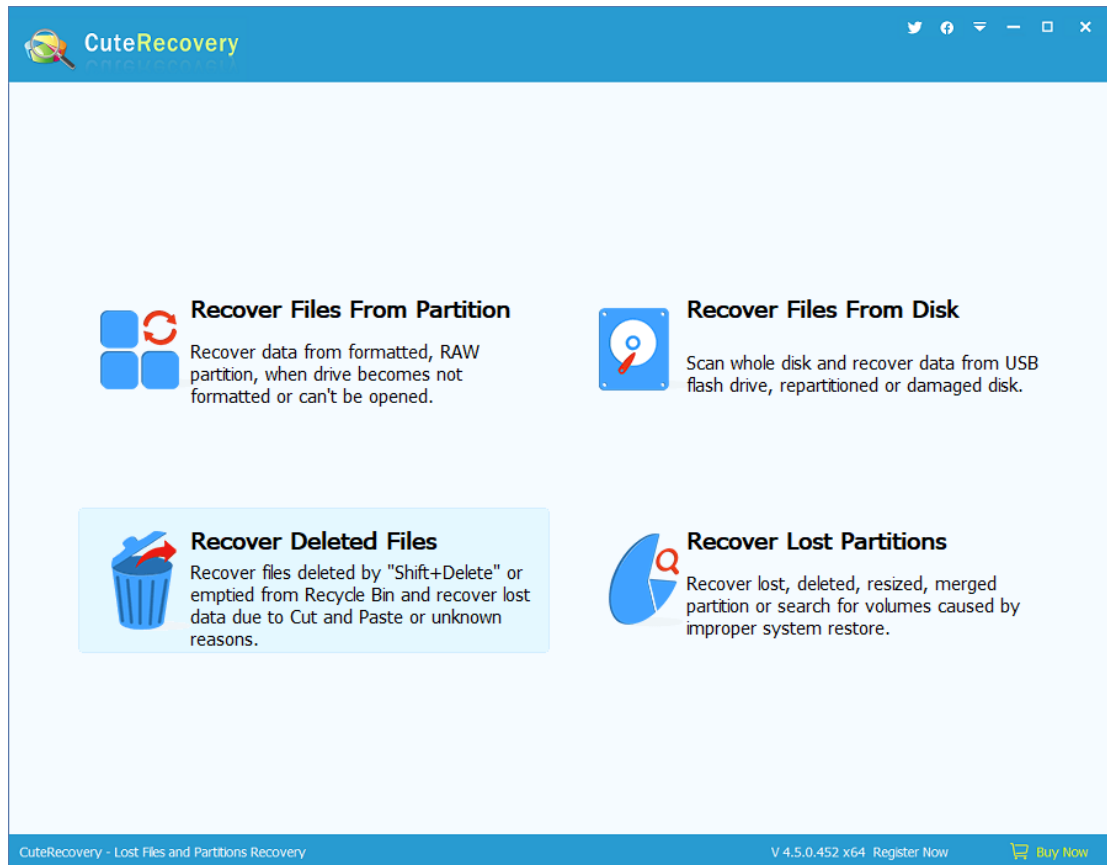
Click "[Recover Files From Disk](#)" and CuteRecovery will start to recover files from a specified disk. It searches the whole disk and displays all the partitions and files it finds out. This function applies to the situation that partition table is damaged and cannot be recovered or the first two modes don't work well.

Click "[Recover Delete Files](#)" and CuteRecovery will start to recover deleted files from partitions. This function applies to the case that files are deleted and no new files are written in.

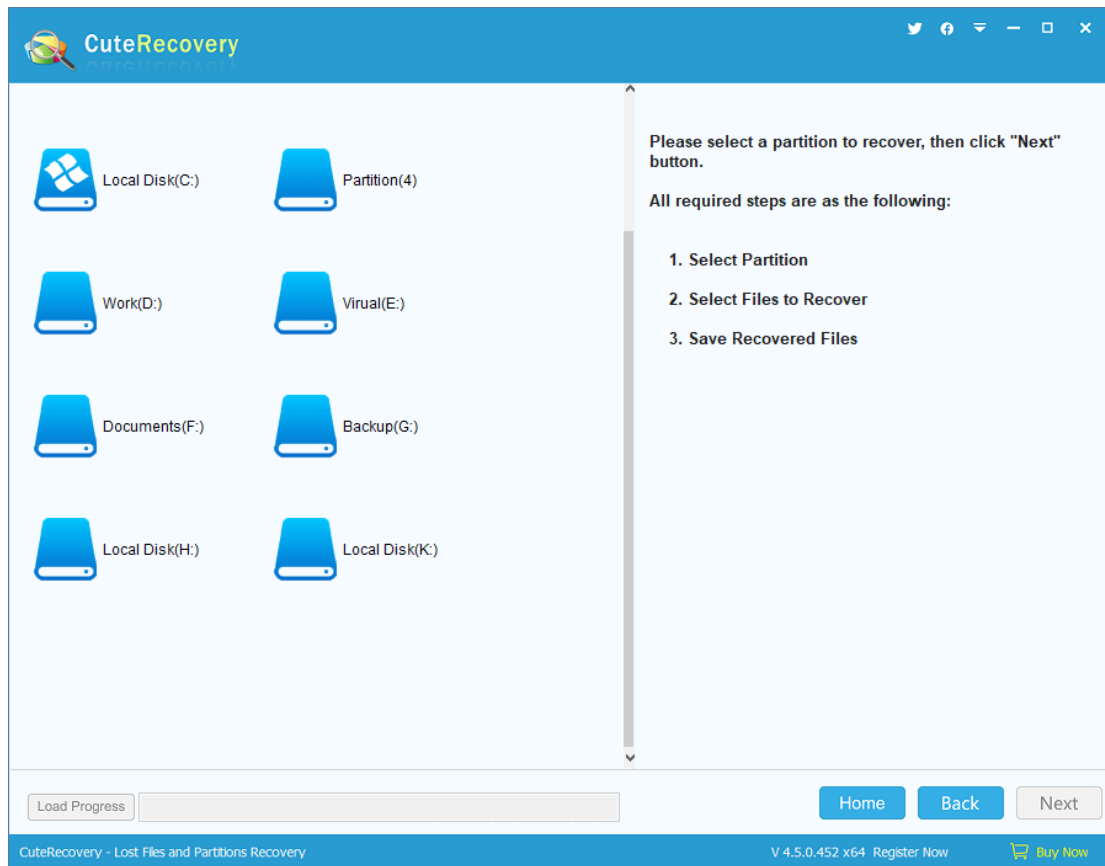
Deleted File Recovery

The function "Recover Deleted Files" supports to recover files deleted by Shift + Delete or emptied from Recycle Bin and recover lost data due to Cut Paste or unknown reasons. When a file is deleted, actually its data isn't erased from disk. Normally, it is only marked as "Deleted" and file data and file name are still kept on the disk. Thus, as long as no new data is written in (i.e., deleted file is not overwritten by new data), the deleted file can be recovered through certain techniques. The deletion is usually caused by improper operations, virus and software (except file crushing software).

To recover deleted files, please click the button "Recover Deleted Files" on the main interface as follows:

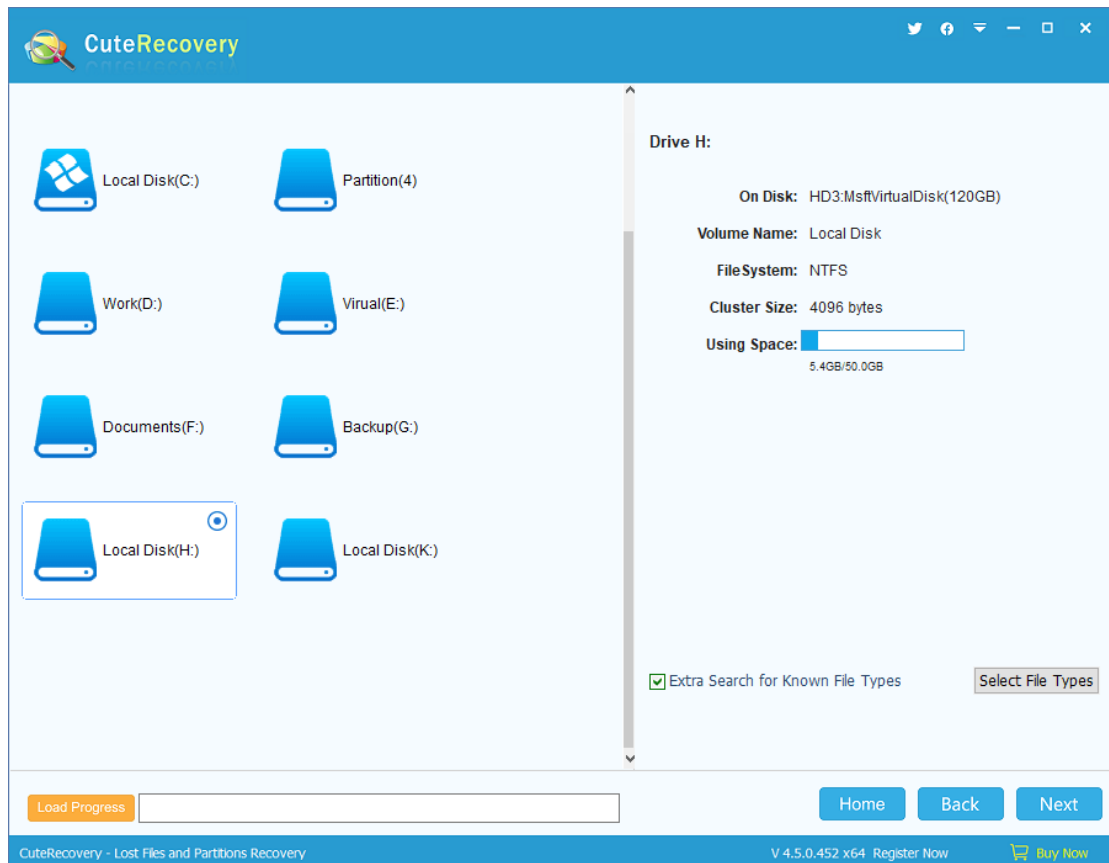


This function is carried out in 3 steps: select partition, select files to recover, and save recovered files.



Select the partition where deleted files were stored and the information of the selected drive is displayed on the right part, as shown in the following picture:

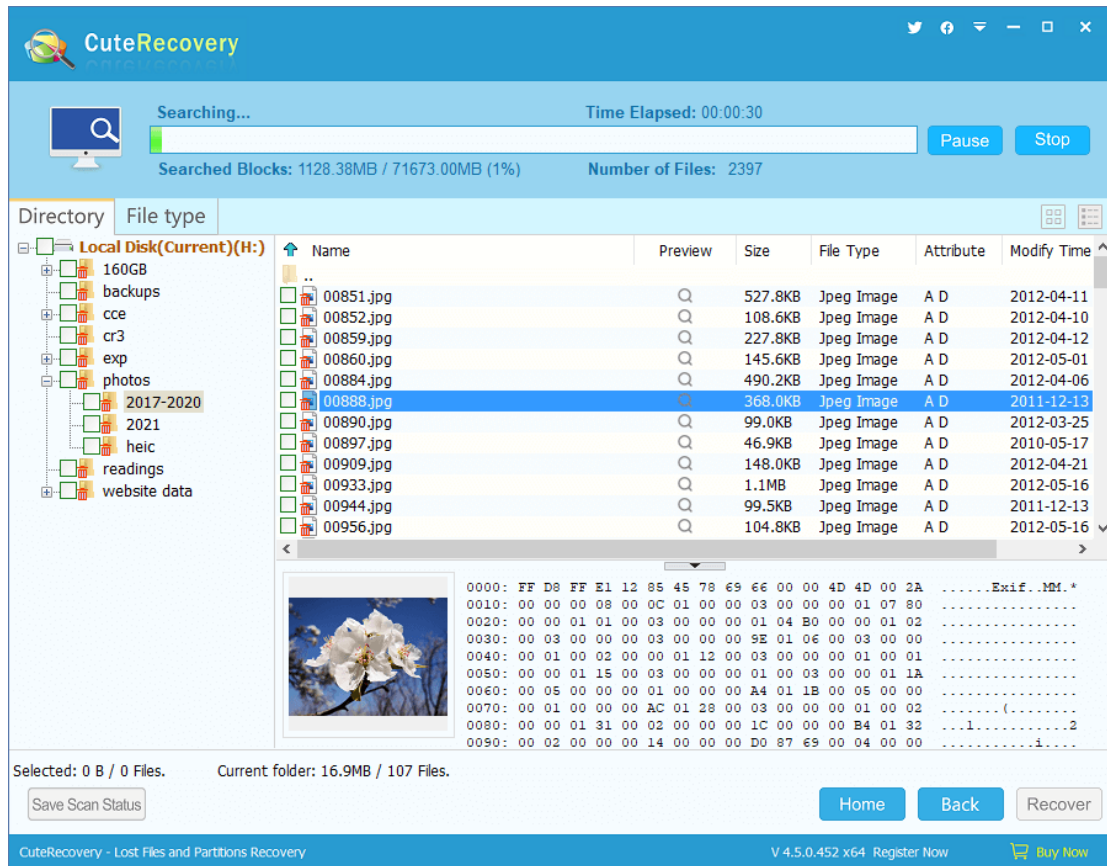
If file system of the partition you selected is FAT32 or FAT16, there'll be a check box "Search for earlier deleted files" on the lower right corner. If you want to recover earlier deleted files, you can check it.



Make sure that the selected partition is the one from which you want to recover files and then click "Next". CuteRecovery starts to scan the partition and enter next step "scan files to recover".

During scanning, CuteRecovery displays deleted files it finds out and the way it displays files is similar to Windows Explore: file directory is on the left and file list is on the right part. There is a check box before every file or folder. Check all files and folders you want to recover and click "Recover" to prepare for copying files. If you click a file, there'll be a preview thumbnail of the file

on the lower right part. CuteRecovery supports previewing pictures, text, video, audio files, PDF files and Microsoft Office documents, by which you can judge whether files can be correctly recovered.



Filter Files: If you just want to recover part of files, you can filter files by setting options for example, "Name" (supports name extension), size and modify time, and then click "Filter". By default, only deleted files are displayed. If you want it to display all normal files, you can select the option "Normal" and click "Filter Files" button. But normal files don't have check boxes, so they cannot be selected.

Filter Files ✕

Filter Option _____

Deleted **Normal** **System**

File Type _____

Word Excel PPT PDF Image Audio Video Email

Other (*.jpg;*.bmp)

Modify Time _____

0-3days 4-7days 8-15days 16-310days Customize

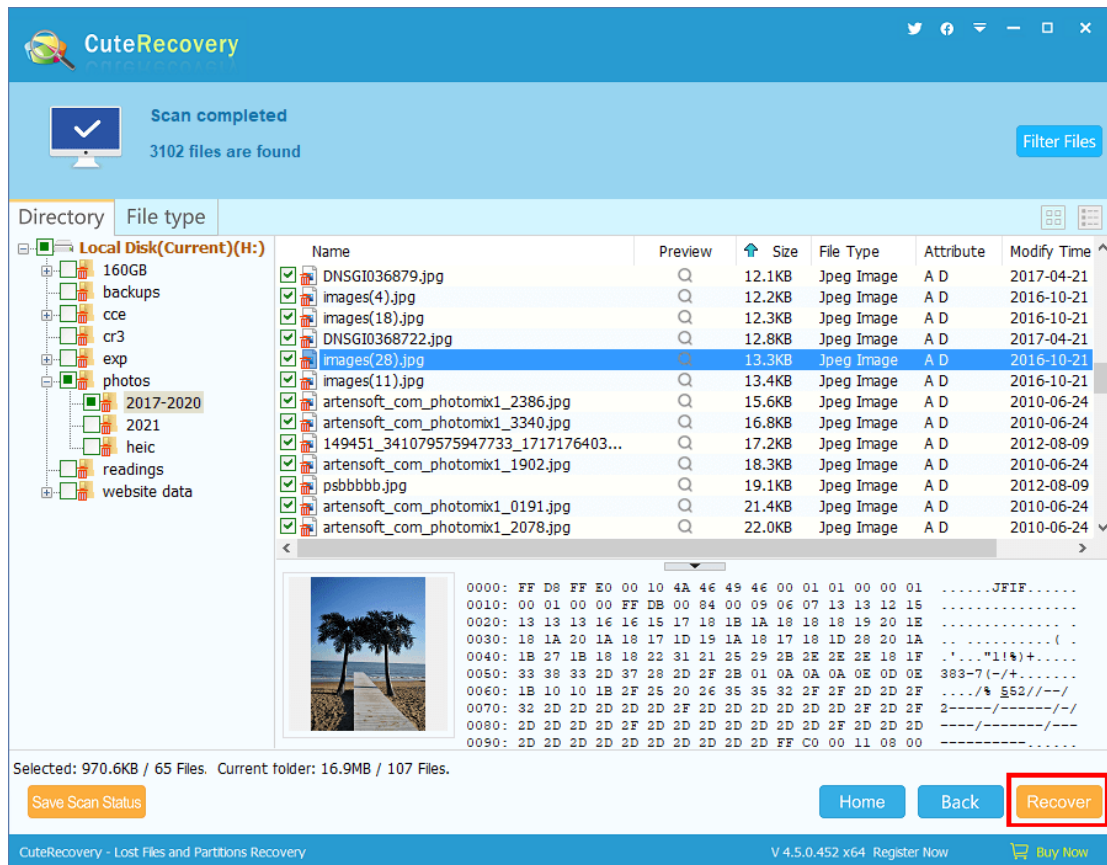
Size _____

0-100KB 100KB-10MB 10MB-100MB 100MB-1GB

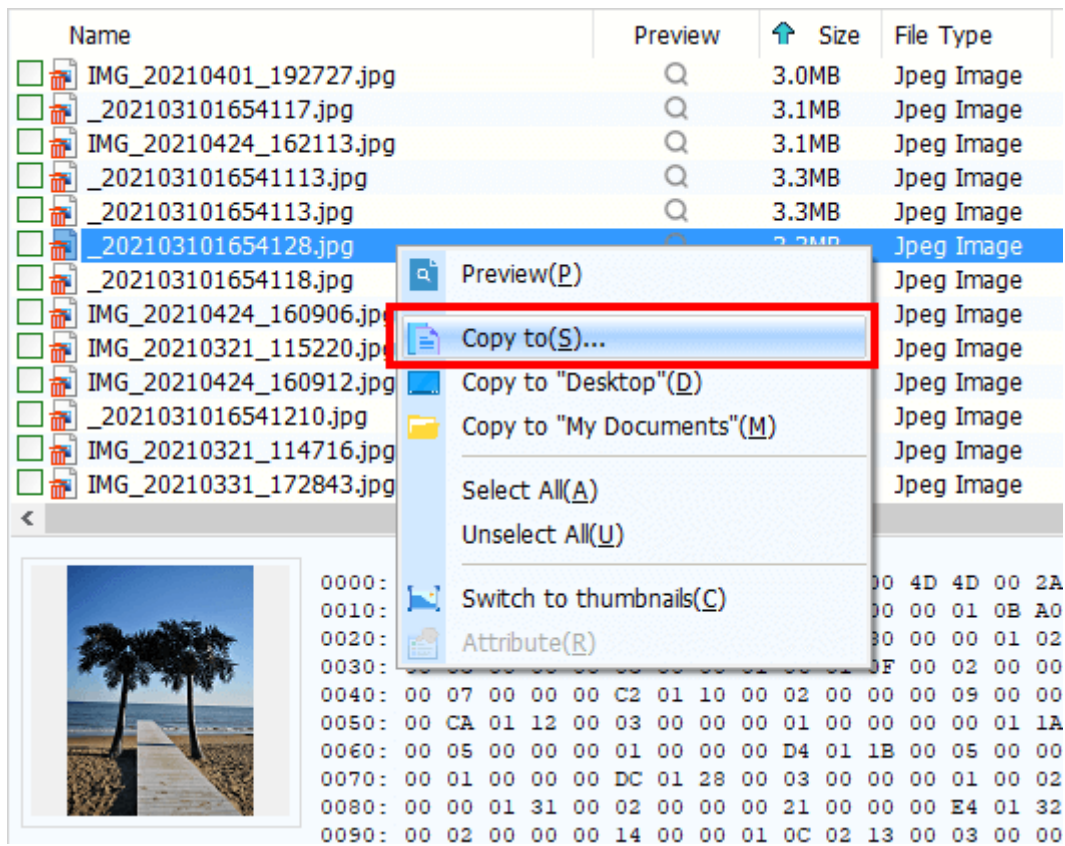
Customize

Default Settings **Filter** **Cancel**

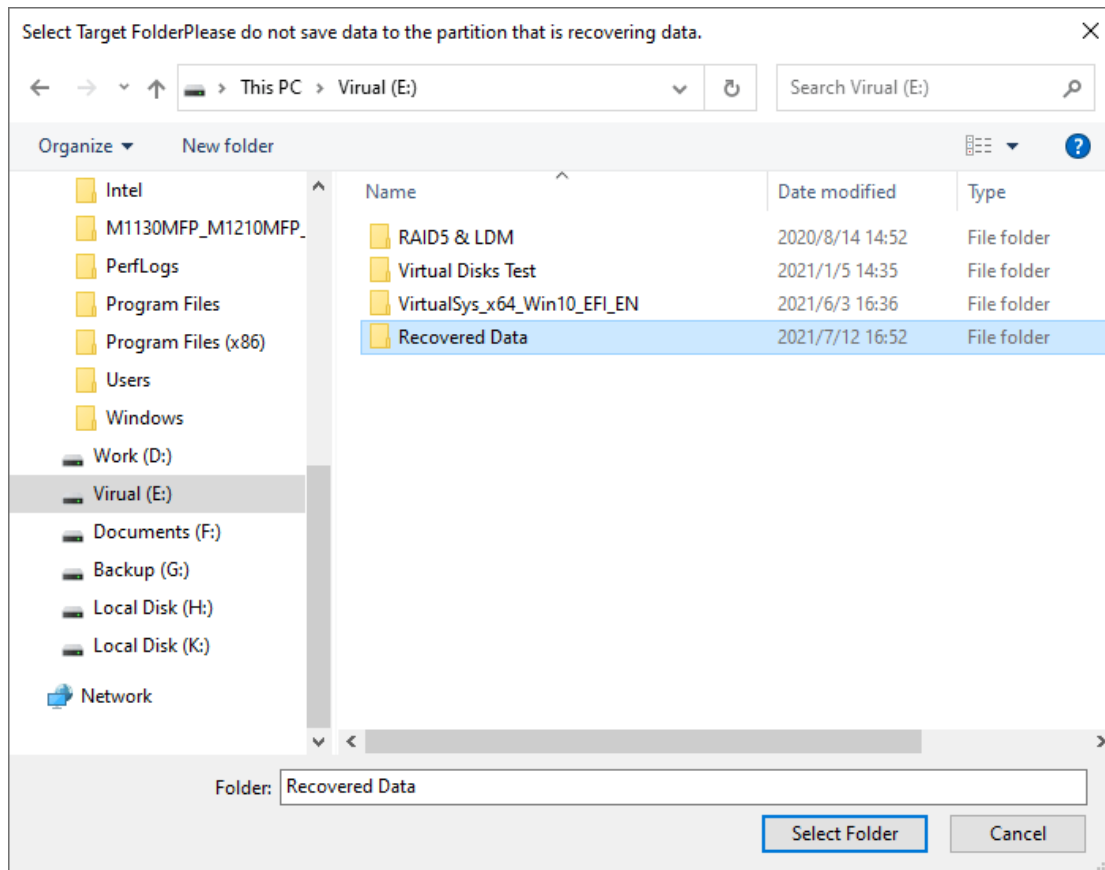
To copy files, you can click "Recover" button as well as use the context menu.



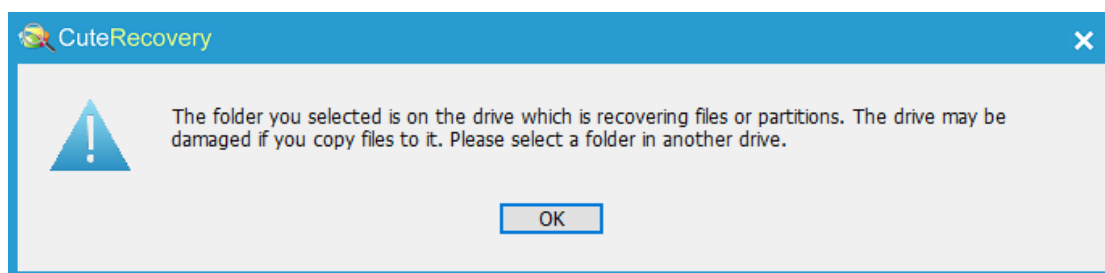
Another way to copy files is using the context menu. Select files that need recovering and right click mouse button and on the popped-up menu select the item "Copy to", and then select a target folder. For detailed operations, please refer to "[Copy Files by Context Menu](#)".



Then you need to specify a location to save recovered data. To avoid secondary data destruction, please do not set the target folder to the partition which is recovering data.

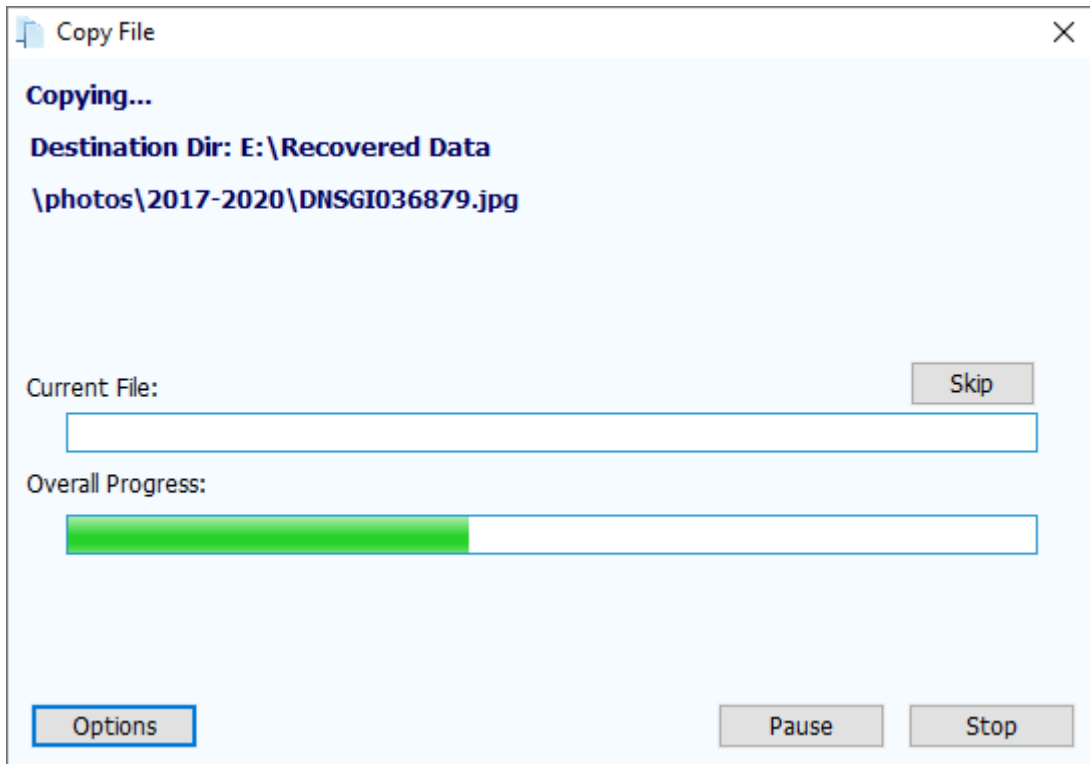


If you set the target folder to the partition which is recovering data, Cute Recovery will pop up the following warning message. You need to select another target folder.

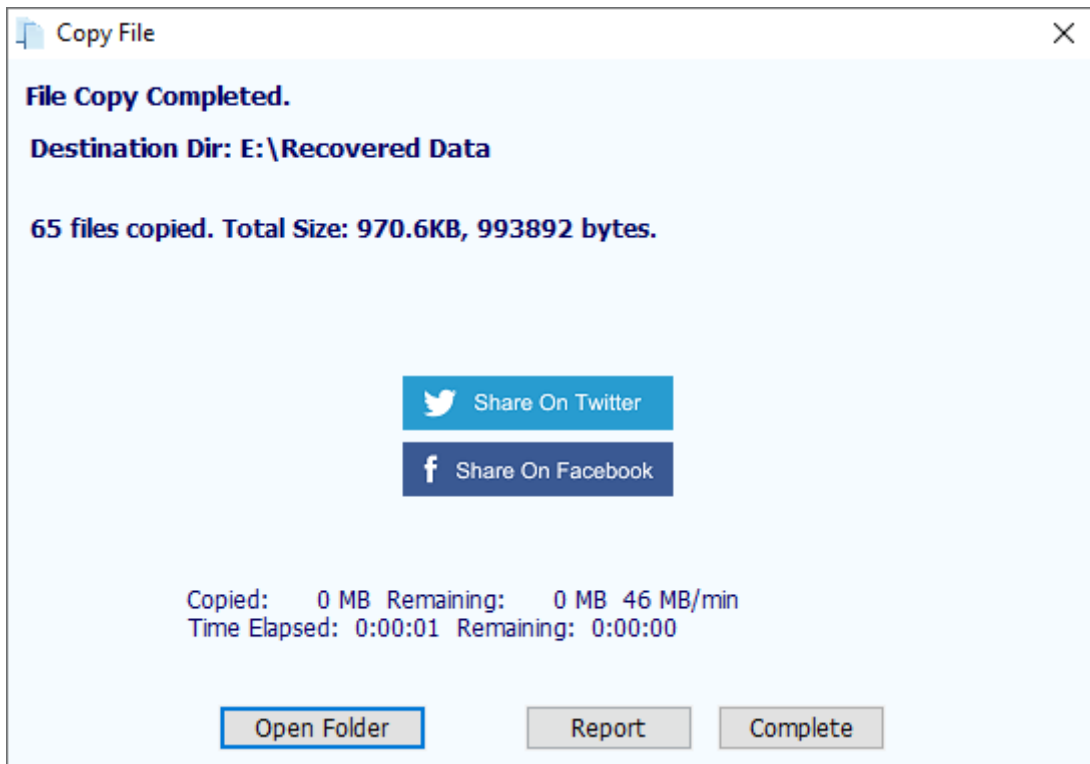


Please select another target folder.

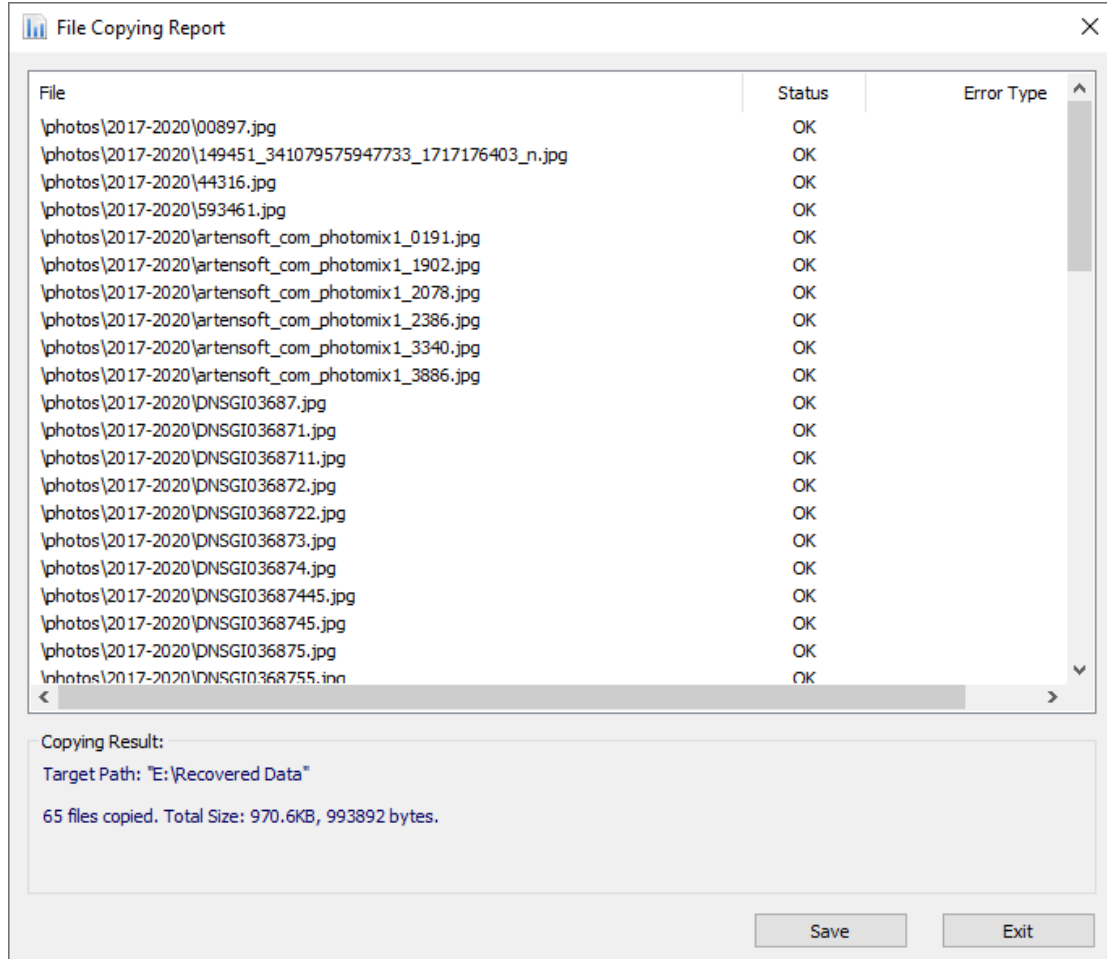
Cute Recovery is copying recovered data to the specified location.



File copy is completed:



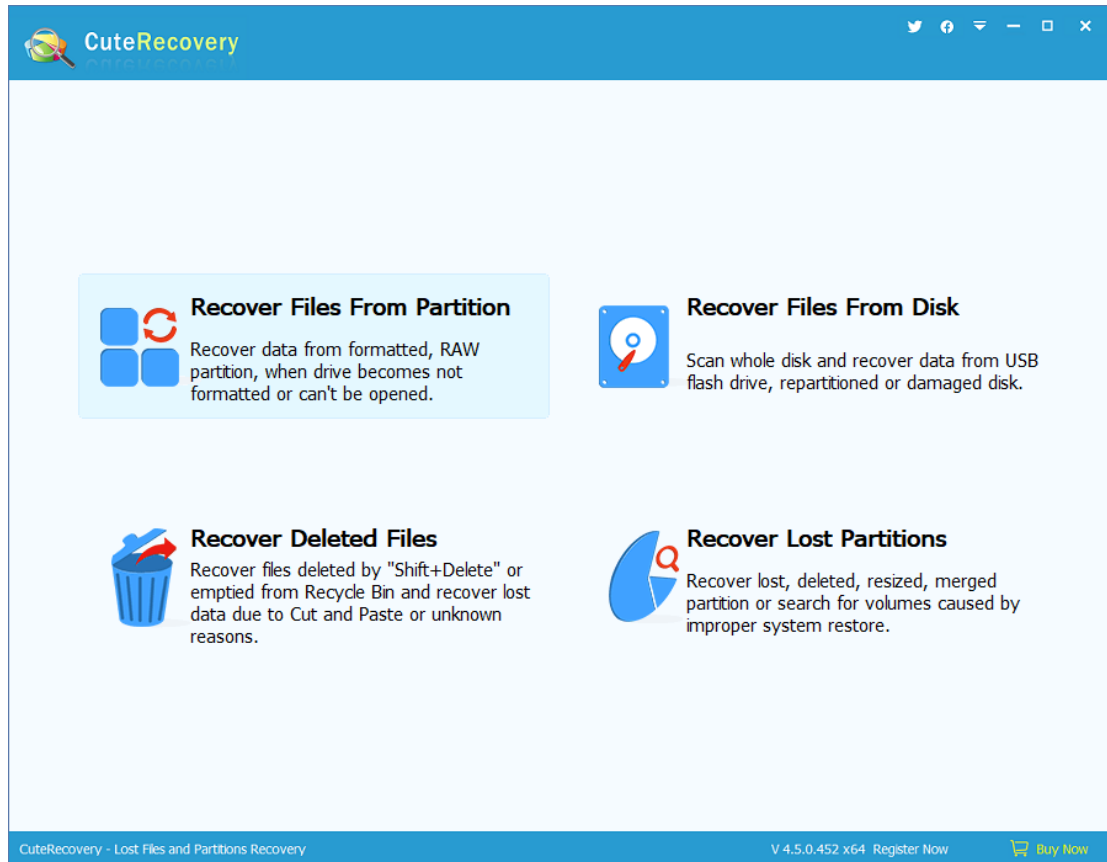
You can click the button "Details" to see the "File Copy Report"; on the following dialog box click "Save" to save the report to a text file.



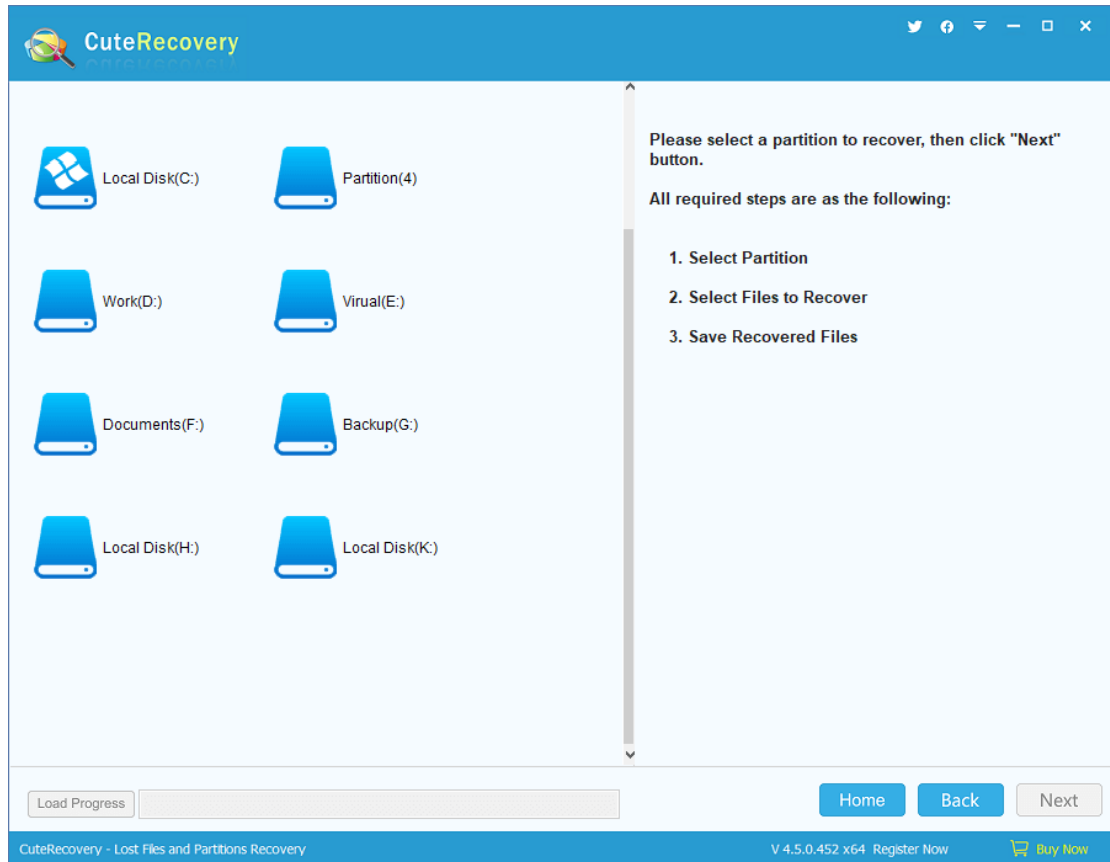
Whole Partition File Recovery

In many cases, a partition (it has a drive letter) may become inaccessible, for example, when you open a partition, it prompts "The disk in drive is not formatted. Do you want to format it now?", "The file or directory is corrupted and unreadable", "The volume does not contain a recognized file system", "The parameter is incorrect", or the partition becomes RAW format. Files in the partition are not accessible. Main reasons are as follows: USB flash disk or external hard drive is pulled out directly without clicking "Safely Remove Hardware and Eject Media", virus attack, system BSOD, bad sectors, sudden power failure, etc. Besides, if a partition is formatted by accident, its files cannot be seen or accessed as well. The common feature of these situations is that the partition becomes inaccessible or formatted but the partition is not lost. When these happen, you can use CuteRecovery to recover files.

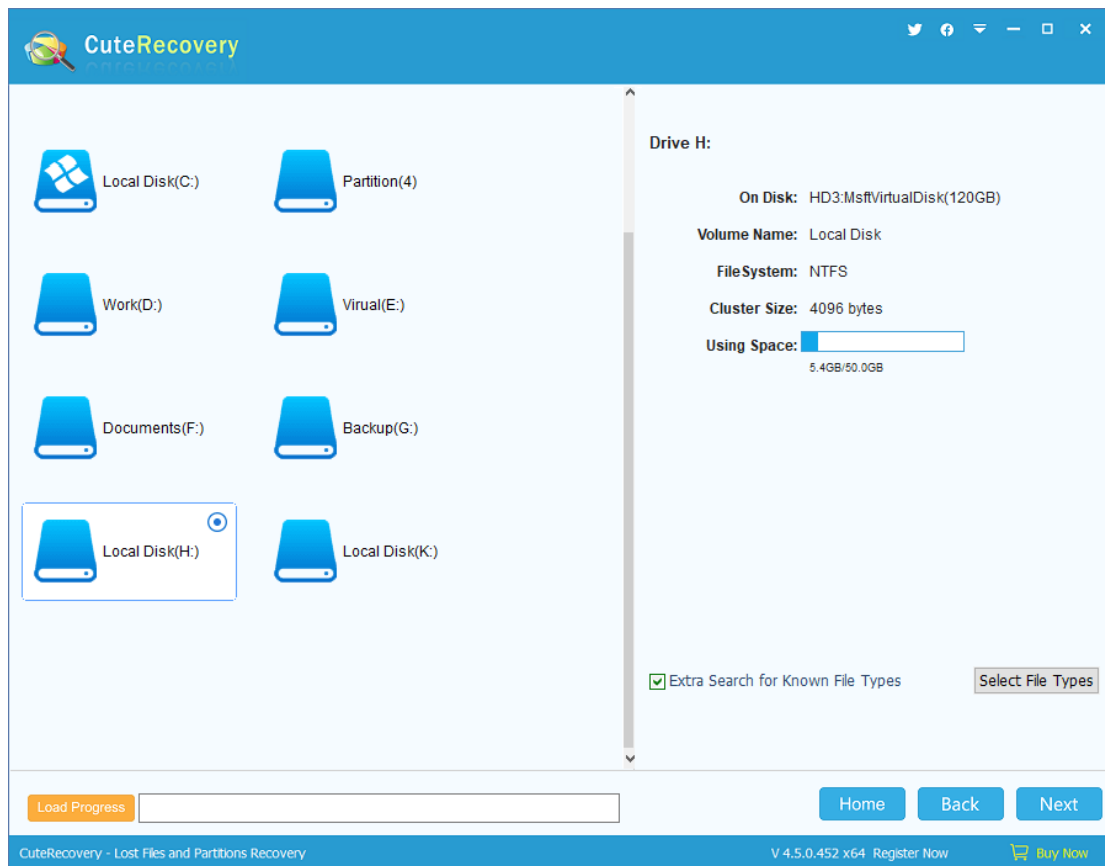
To start recovering files, please click the button "Recover Files From Partition" on the main interface as below:



This function is divided into 3 steps: Select Partition, Select Files to Recover, and Save Recovered Files.



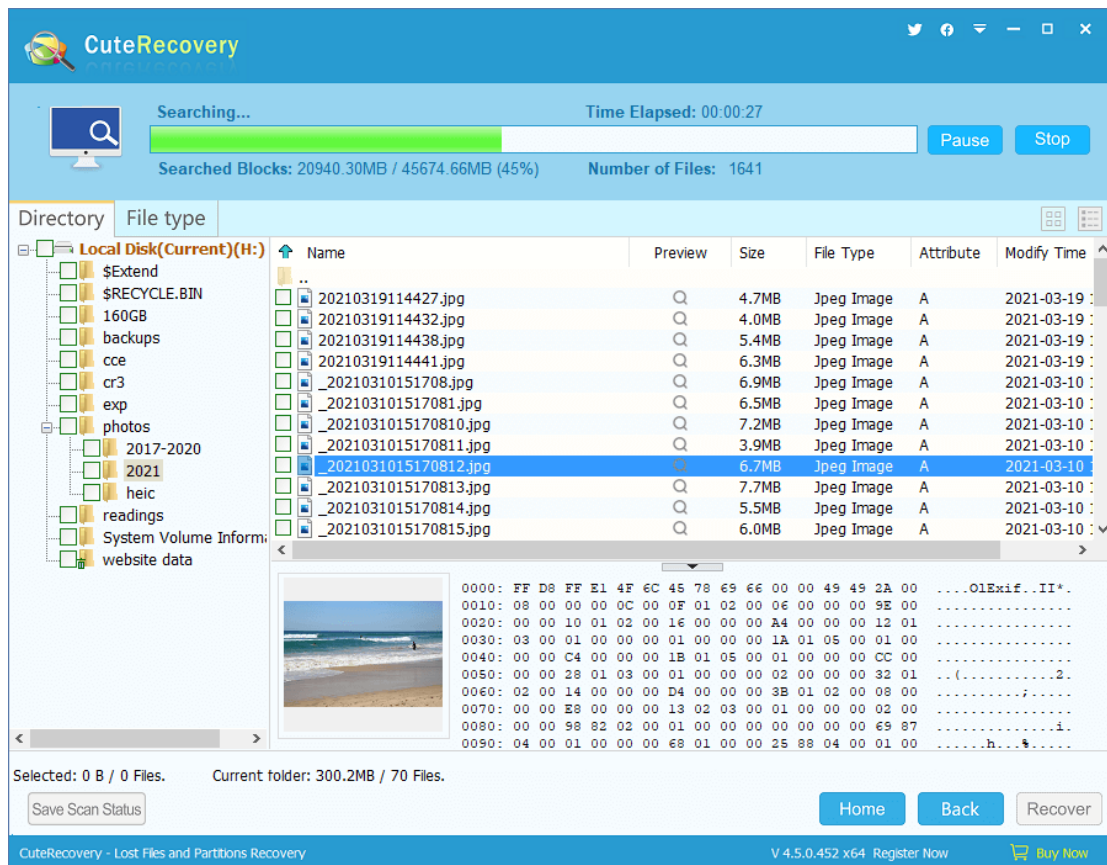
Please select the partition that needs recovering files, and information of the selected drive will be displayed on the right part, as shown below:



If you've recovered files and saved scan progress before, you can click the button "Load Progress" to continue the scanning.

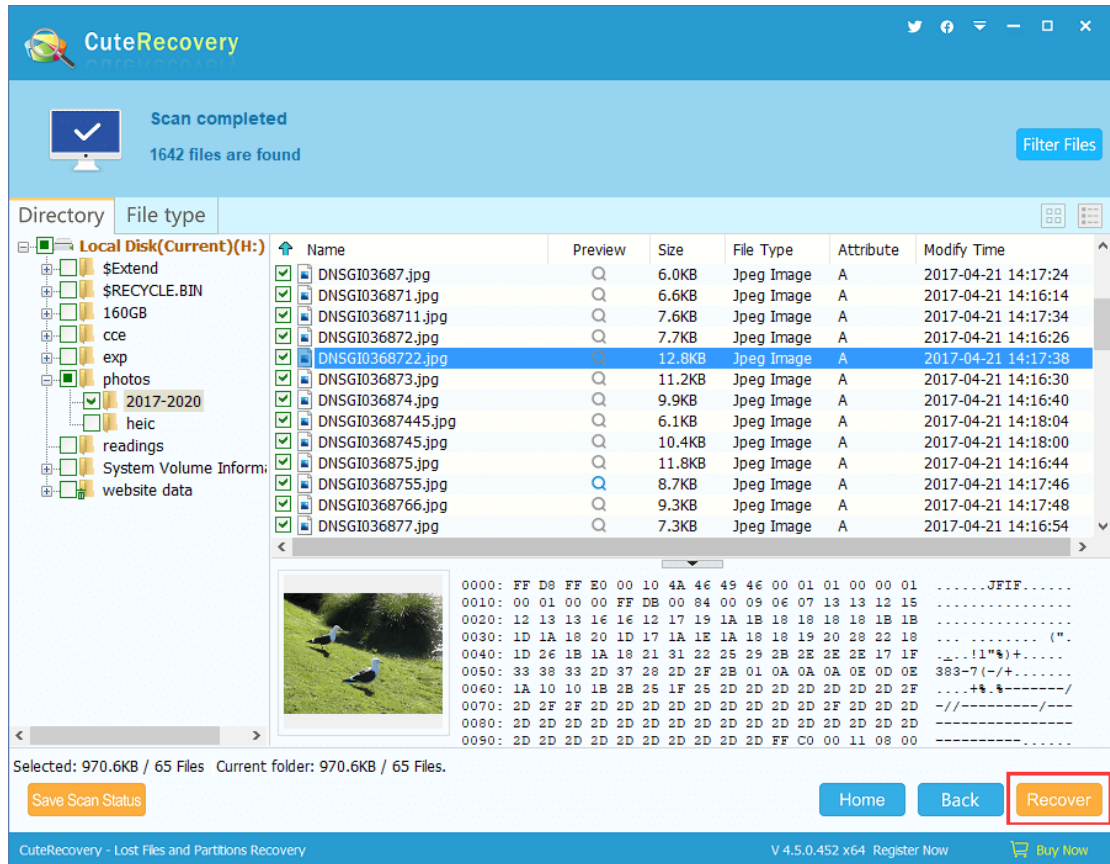
Make sure the selected partition is the one you want to recover files, and then click "Next". CuteRecovery starts to scan the partition.

During scanning, CuteRecovery displays files of the partition and the way it displays files is similar to Windows File Explorer. On the left part is the directory and on the right the file list.



There is a check box on the left of every file and folder and you can check files and folders you want to recover and click the button "Recover".

Tip: When you click a file, there'll be a thumbnail preview image on the lower part of the panel. Double-click the file and you can preview file content on a pop-up file preview window. CuteRecovery supports to preview photos, Microsoft Office documents, PDF files, video, audio and text files, and you can easily check whether lost files are correct before copying files.



Besides, you can filter files by setting the name type, file attribute, file size and modify time. Set your options and then click the "Filter Files" button.

Filter Files

Filter Option

Deleted Normal System

File Type

Word Excel PPT PDF Image Audio Video Email

Other *.* (*.jpg;*.bmp)

Modify Time

0-3days 4-7days 8-15days 16-310days Customize

Size

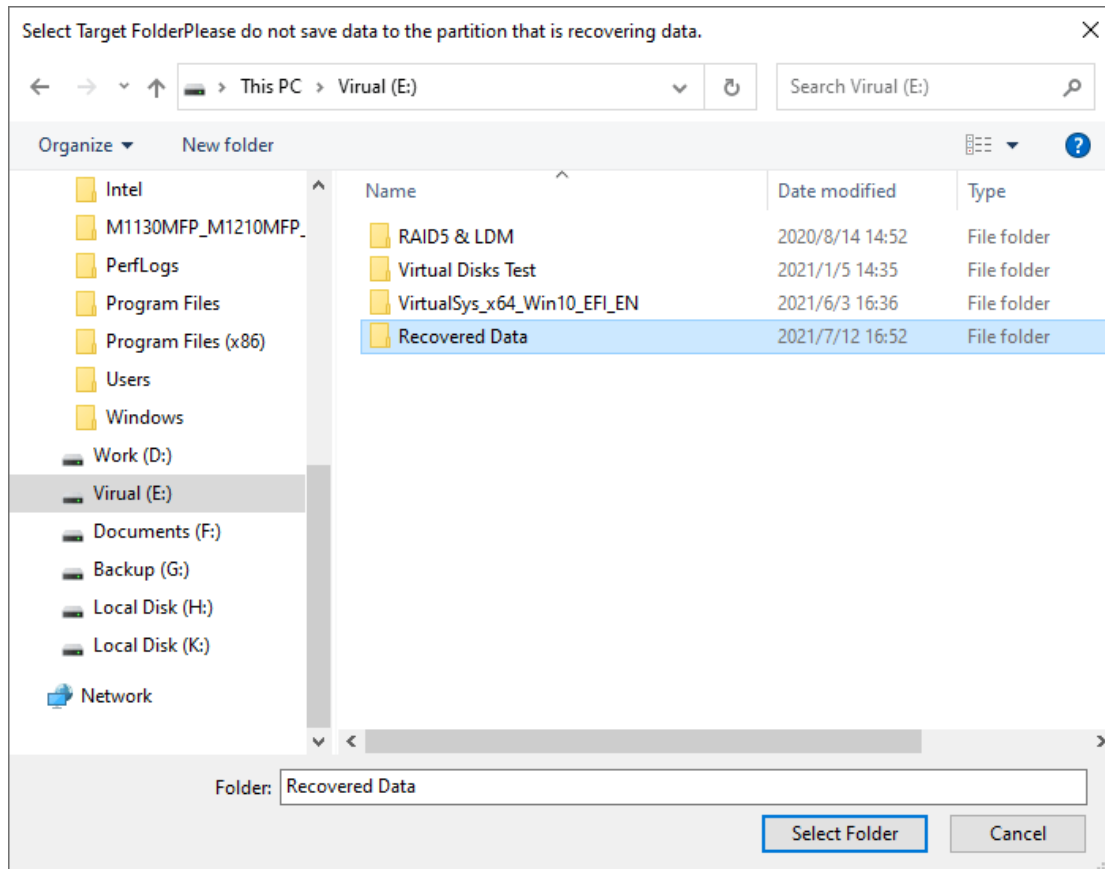
0-100KB 100KB-10MB 10MB-100MB 100MB-1GB

Customize 0 KB - 65 KB

Default Settings Filter Cancel

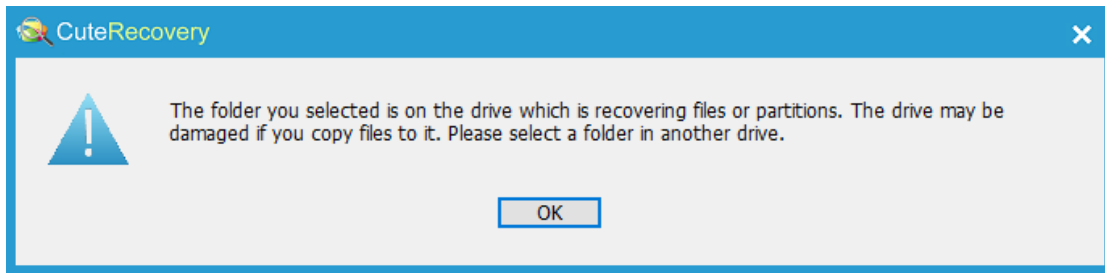
CuteRecovery provides two ways of copying out the recovered files. One is the context menu. After selecting the files and folders to be copied, right click the mouse button, a context menu will pop up. Then select "Copy to" and set a target folder to start copying. For more details, please refer to "[Copy Files by Context Menu](#)".

Another way to copy recovered files is to follow the wizard. After selecting the files and folders you want to copy, click the "Recover" button. CuteRecovery will take you into the dialog "Select Target Folder", as follows:



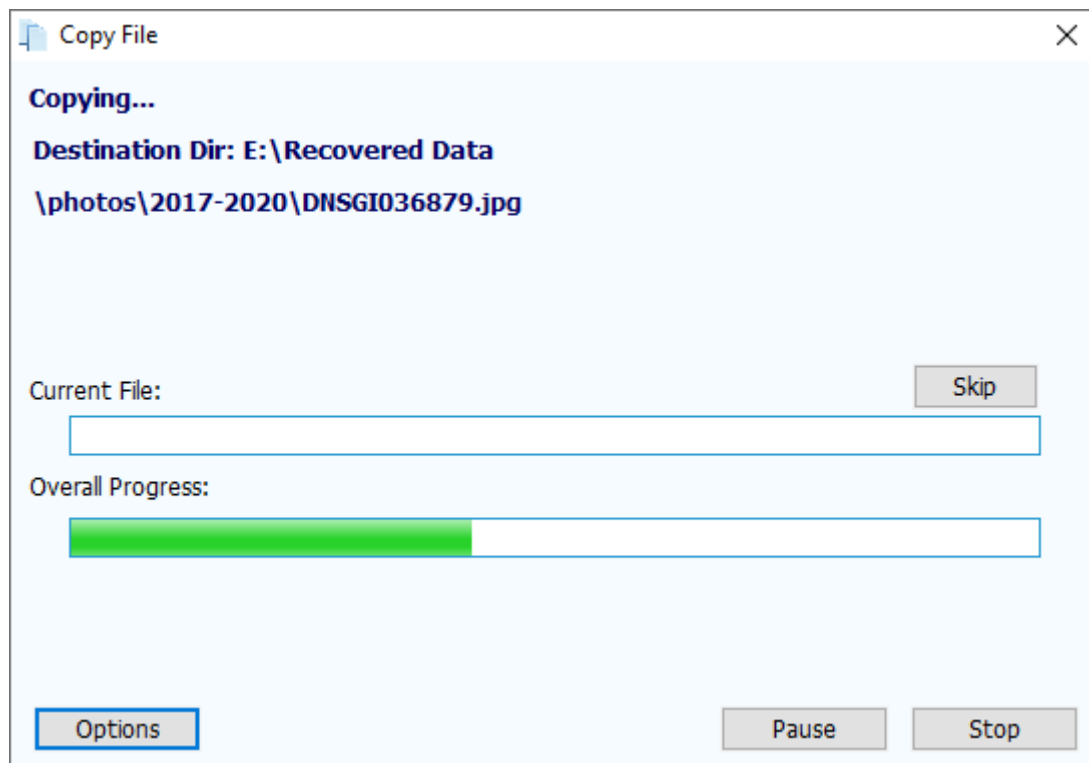
Click the "Select Folder" button after specifying a target folder, and Cute Recovery starts to copy files.

If you set the target folder to the partition which is recovering files, Cute Recovery will pop up the following warning message "The folder you selected is on the drive which is recovering files or partitions. The drive may be damaged if you copy files to it. Please select a folder in another drive."



Please select another target folder.

CuteRecovery is copying recovered data to the specified location.



File copying is completed:



When file copying is finished, the "Report" and "Complete" buttons show up. You can click the "Report" button to open the "File Copy Report" dialog box. Here you can click the "Save" button to save the copy report to a text file.

File Copying Report

File	Status	Error Type
\photos\2017-2020\00897.jpg	OK	
\photos\2017-2020\149451_341079575947733_1717176403_n.jpg	OK	
\photos\2017-2020\44316.jpg	OK	
\photos\2017-2020\593461.jpg	OK	
\photos\2017-2020\artensoft_com_photomix1_0191.jpg	OK	
\photos\2017-2020\artensoft_com_photomix1_1902.jpg	OK	
\photos\2017-2020\artensoft_com_photomix1_2078.jpg	OK	
\photos\2017-2020\artensoft_com_photomix1_2386.jpg	OK	
\photos\2017-2020\artensoft_com_photomix1_3340.jpg	OK	
\photos\2017-2020\artensoft_com_photomix1_3886.jpg	OK	
\photos\2017-2020\DNSGI03687.jpg	OK	
\photos\2017-2020\DNSGI036871.jpg	OK	
\photos\2017-2020\DNSGI0368711.jpg	OK	
\photos\2017-2020\DNSGI036872.jpg	OK	
\photos\2017-2020\DNSGI0368722.jpg	OK	
\photos\2017-2020\DNSGI036873.jpg	OK	
\photos\2017-2020\DNSGI036874.jpg	OK	
\photos\2017-2020\DNSGI03687445.jpg	OK	
\photos\2017-2020\DNSGI0368745.jpg	OK	
\photos\2017-2020\DNSGI036875.jpg	OK	
\photos\2017-2020\DNSGI0368755.inn	OK	

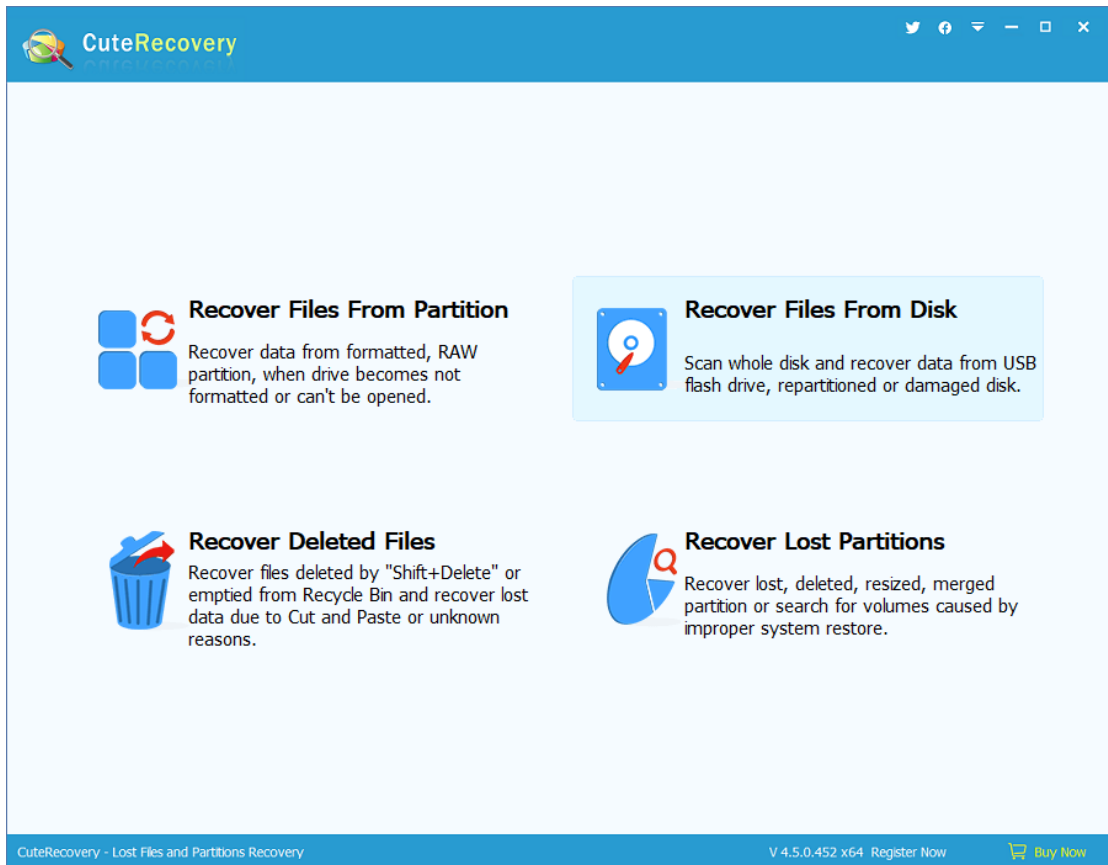
Copying Result:
Target Path: "E:\Recovered Data"
65 files copied. Total Size: 970.6KB, 993892 bytes.

Save Exit

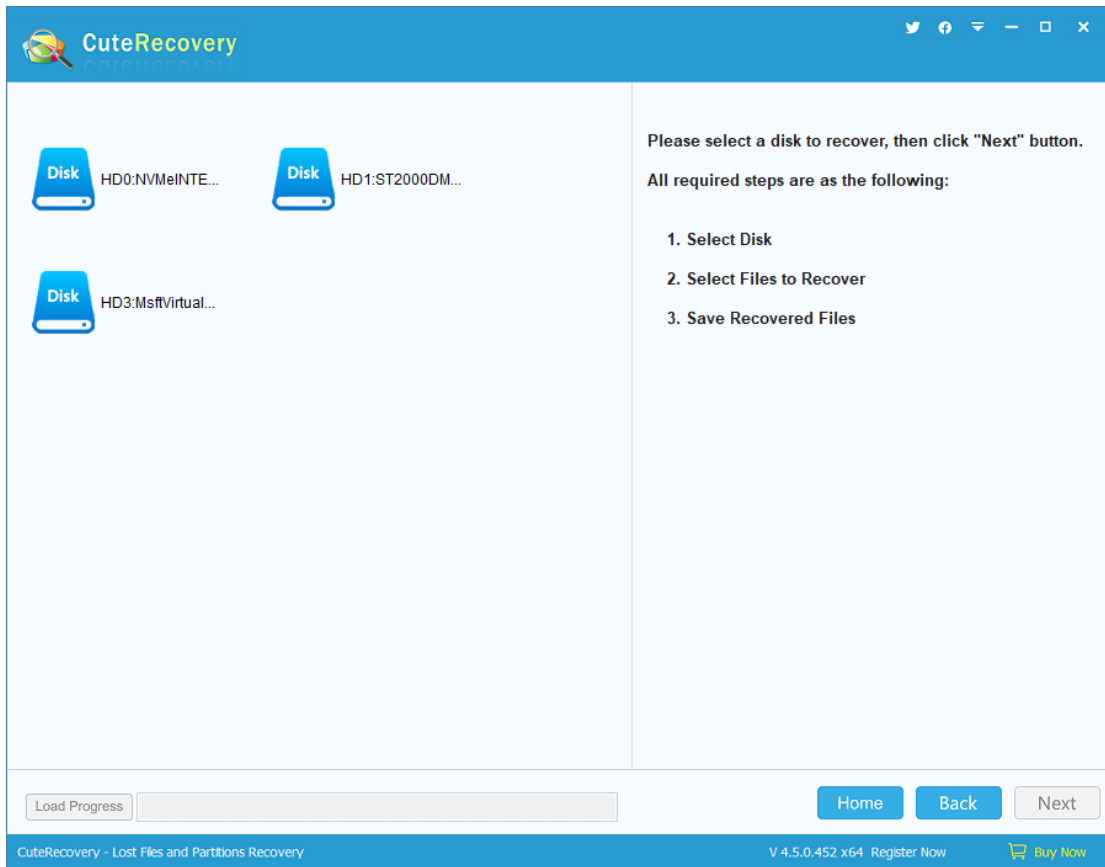
Whole Disk Recovery

If the partition table is badly damaged, and partitions cannot be found by the function "[Recover Lost Partitions](#)", you can use this function to scan the disk directly. CuteRecovery scans the whole disk, restores file directory as much as possible, and classifies files by partition. This function applies to the situation that lost partitions cannot be found directly and lost files cannot be recovered from partition directly.

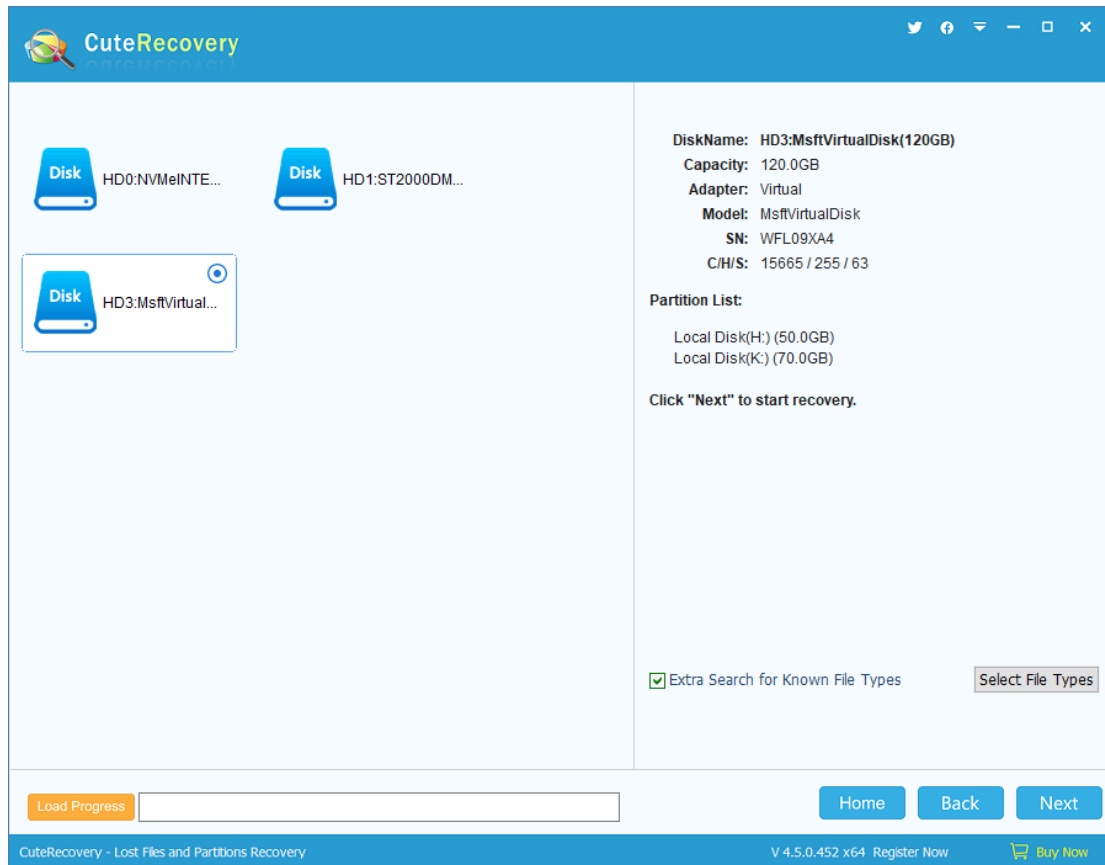
To start recovering files from the whole disk, please click "Recover Files From Disk" on the main interface as below:



This function is split into three steps: Select Disk, Select Files to Recover and Save Recovered Files.



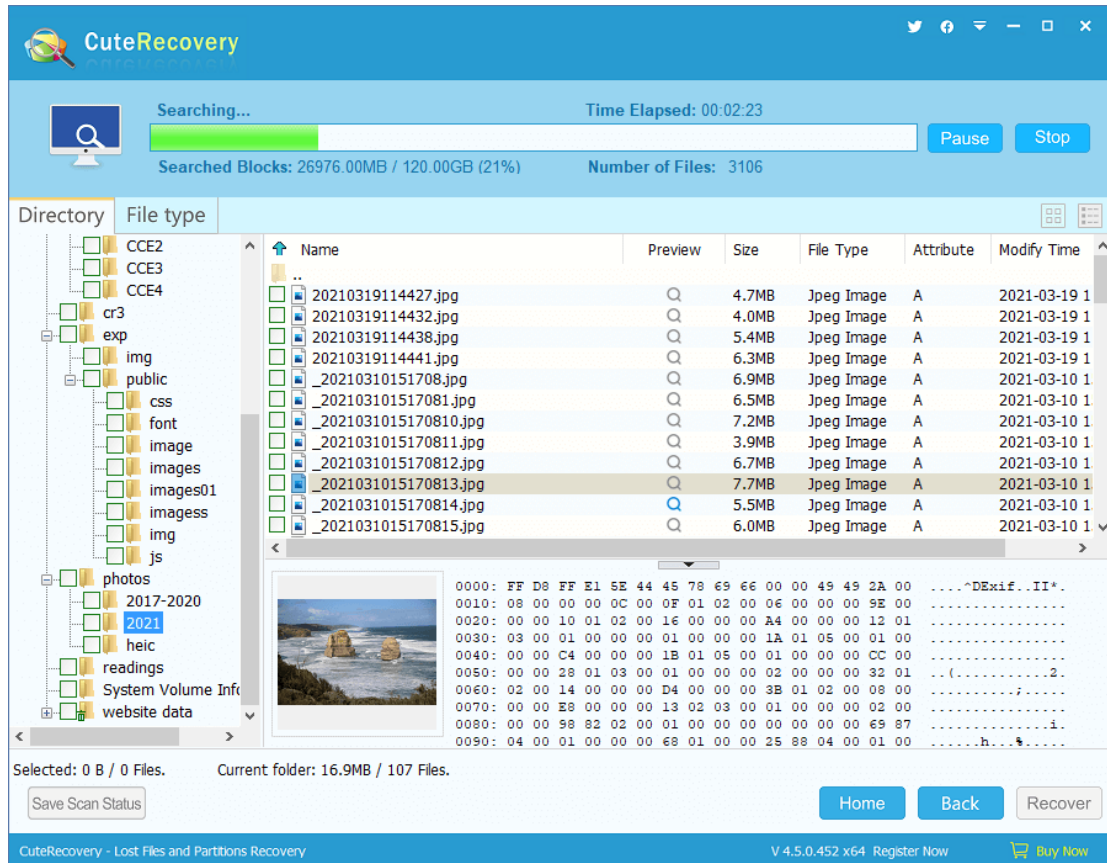
Please select the disk where you want to recover files, and its information including capacity, model, and partitions will be displayed on the right panel.



If the selected disk is the one you want to recover files, then click the "Next" button. CuteRecovery will start searching for files and enter next step - "Scan and select Files to recover".

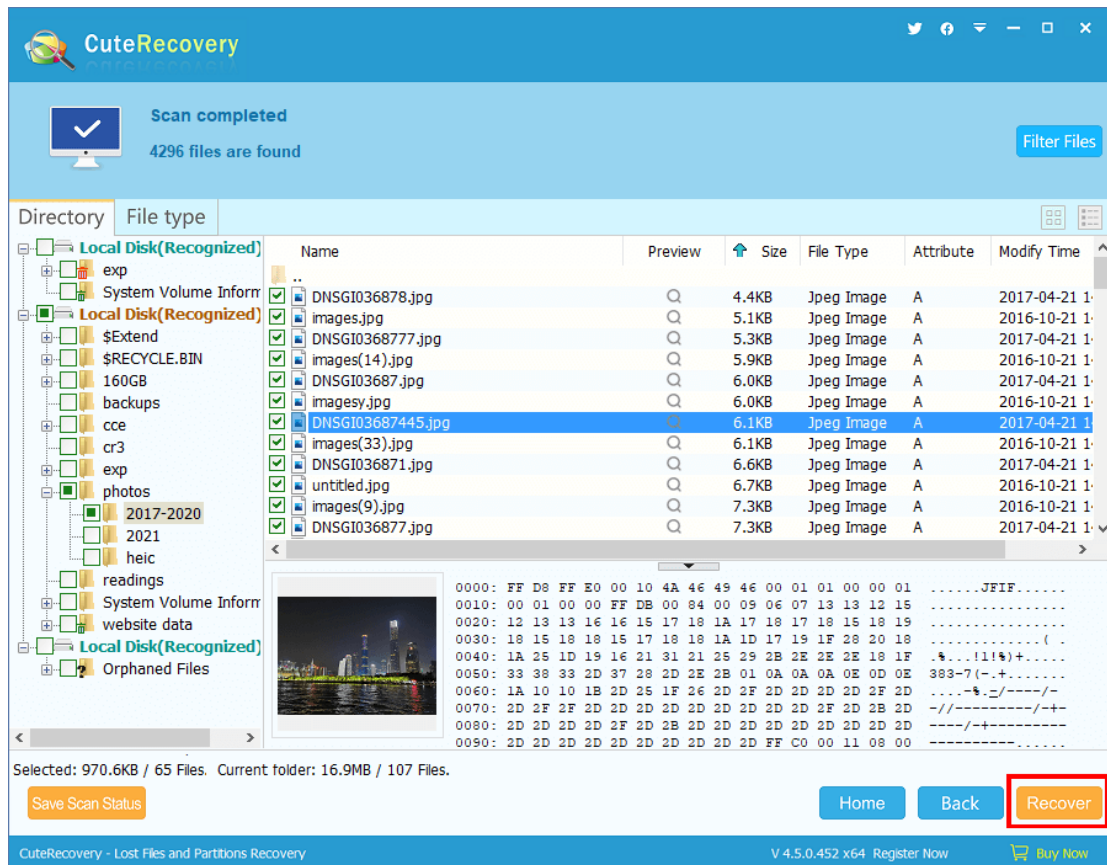
During scanning, CuteRecovery displays all partitions and files it finds out and the way it displays files is similar to Windows File Explorer: file directory is on the left and file list is on the right. There is a check box before every file or folder. Check all files and folders you want to recover and click "Recover" to copy files. When you click a file, there'll be a preview thumbnail of the file on the lower right part. CuteRecovery supports previewing photos, text files, PDF

files, videos, audio files, and Microsoft Office documents, by which you can judge whether files can be successfully recovered in advance.



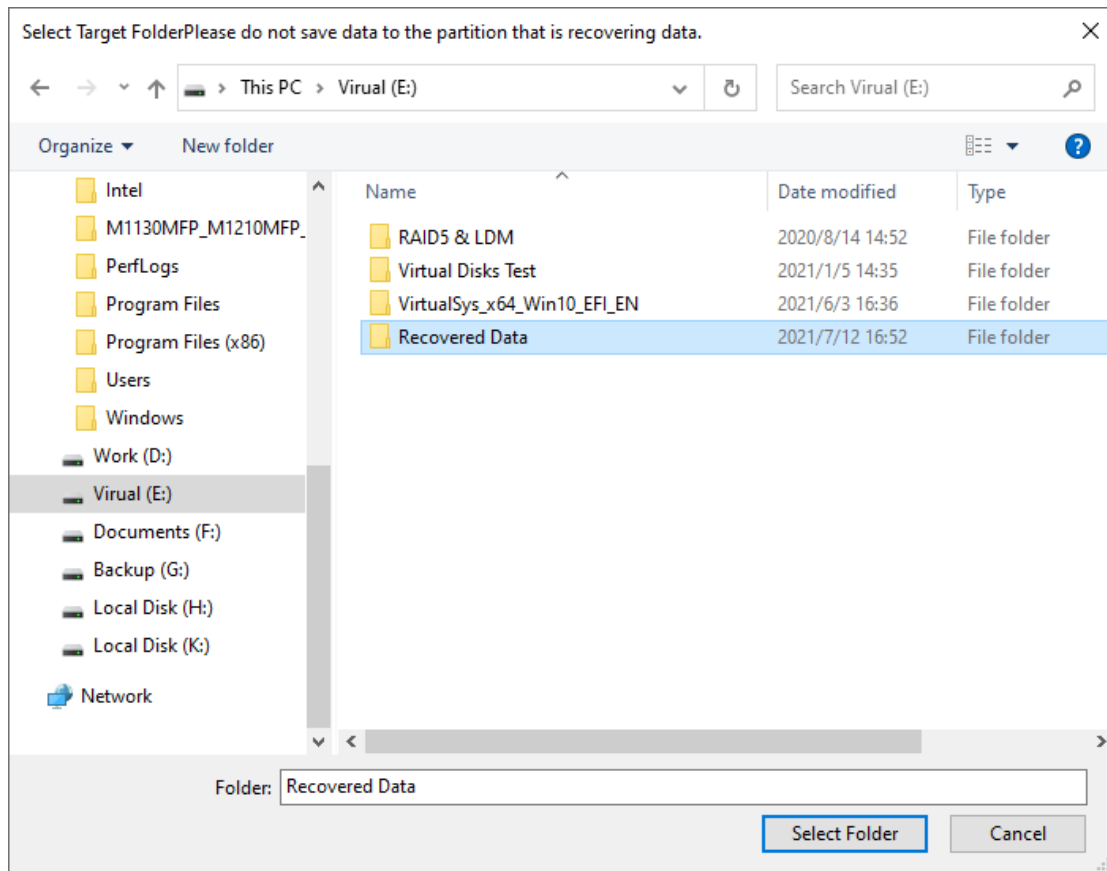
You can filter files by setting the name pattern after scanning, file attribute, file size and modify time. Set your options and then click the "Filter Files" button.

CuteRecovery provides two ways to export recovered files. One way of copying recovered files is to follow the wizard: Select files and folders you want to restore and click the "Recover" button.

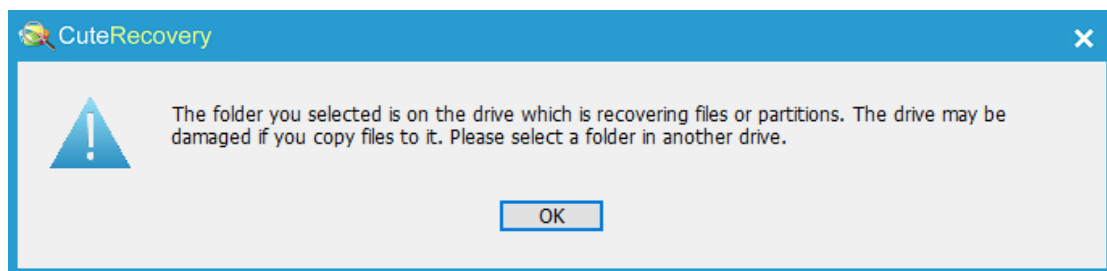


Another way is the context menu. After checking the files and folders to be copied, right click the mouse button, a context menu will pop up. Then select "Copy to" and set a target folder to start copying. For more details, please refer to "[Copy Files by Context Menu](#)".

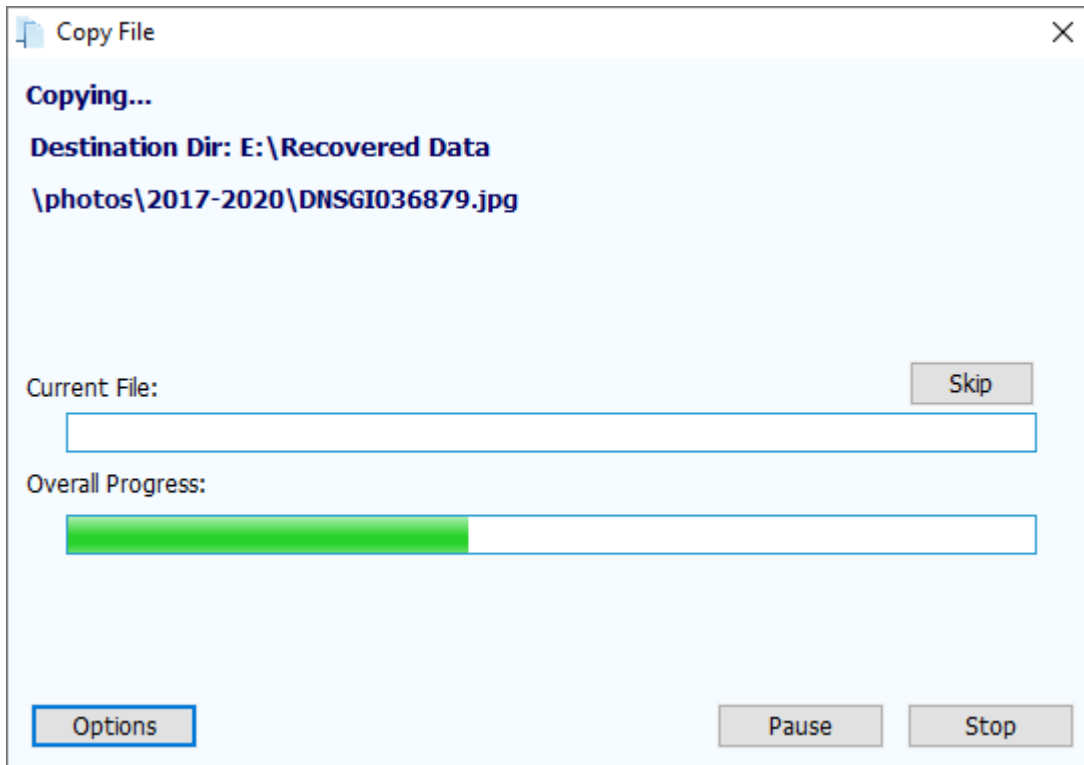
Then CuteRecovery will take you to the dialog to select the target folder, shown as below:



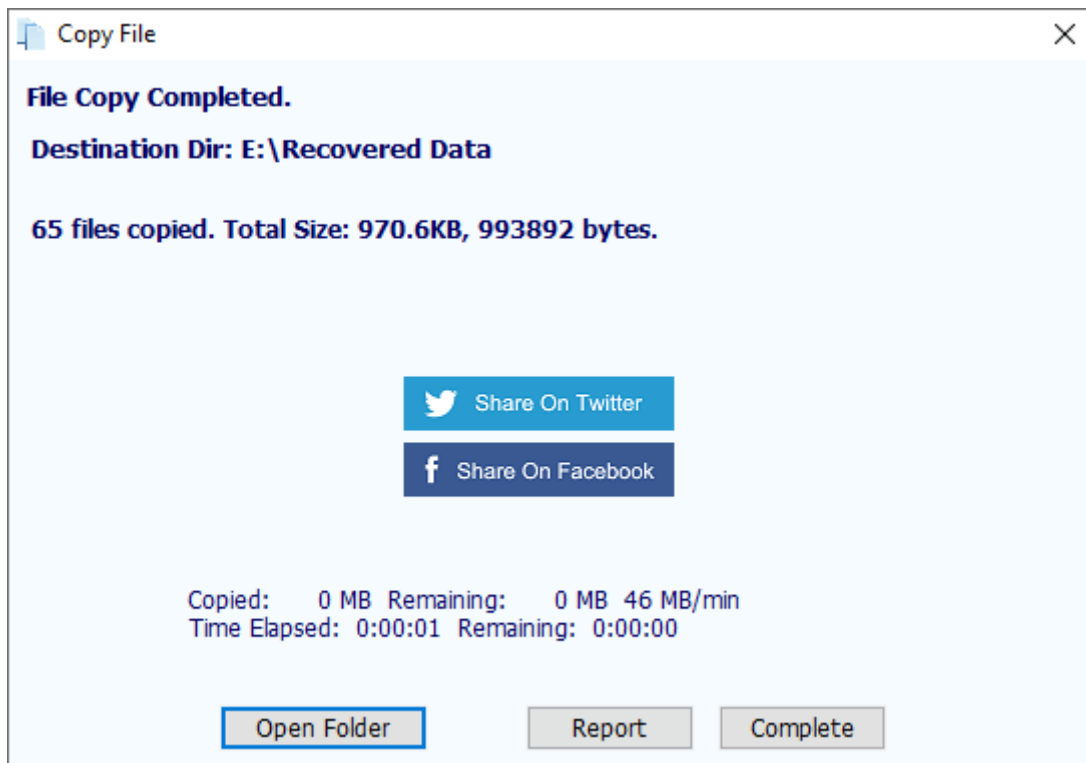
Click the "Select Folder" button to start file copying. If you set the target folder to the disk which is recovering files, CuteRecovery will pop up the following warning message:



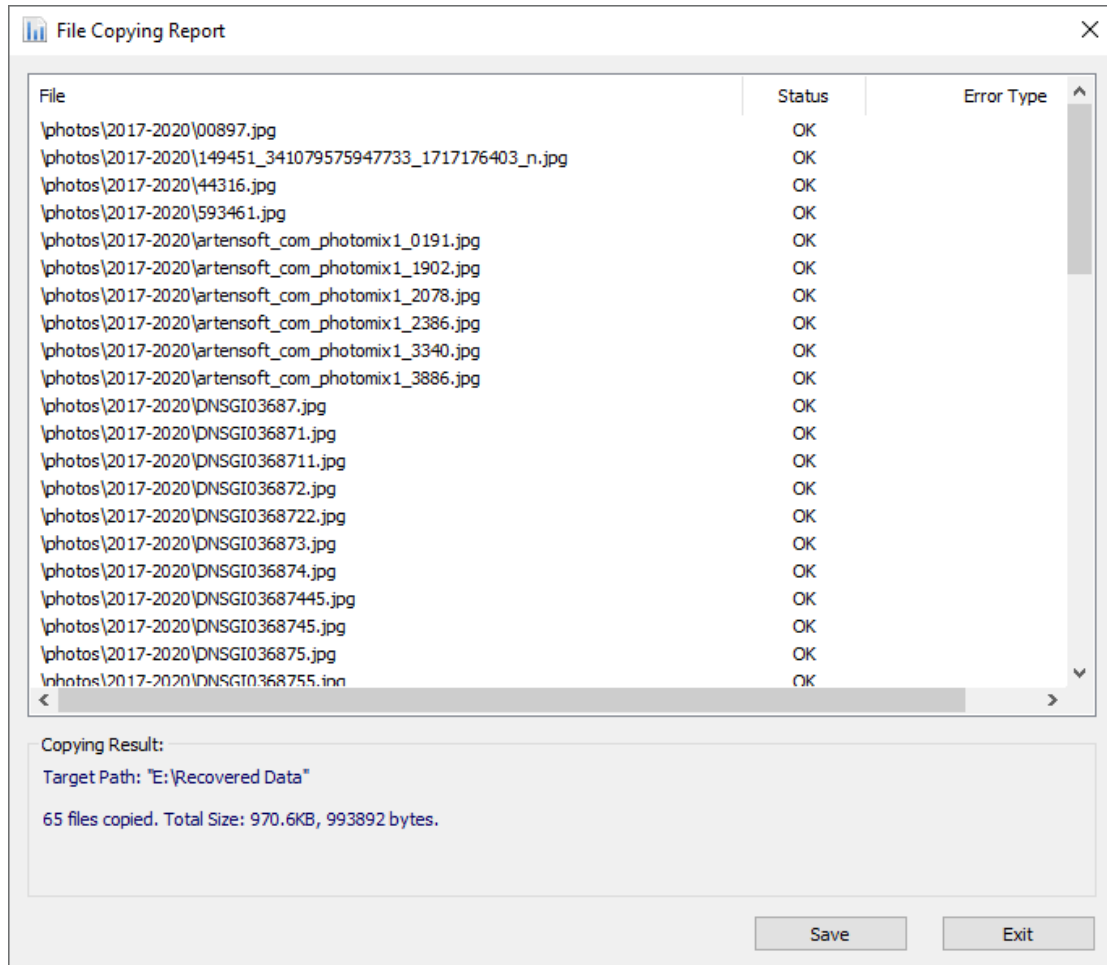
Please select another target folder. CuteRecovery is copying files.



File copying is completed:



When the copy is done the button "Stop" disappears and buttons "Complete" and "Report" show up. You can click the "Report" button to display File Copying Report, and then click "Save" to save the report to a text file.



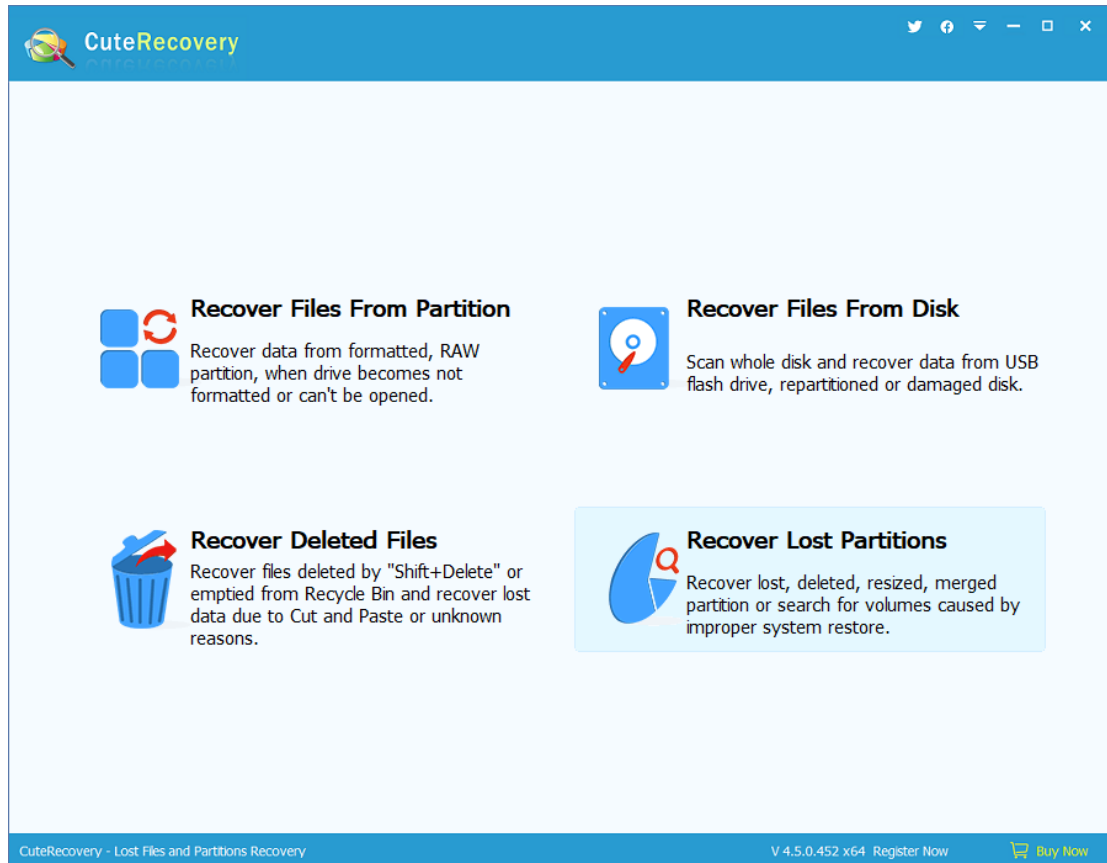
Lost Partition Recovery

Partition lost can be caused by many reasons, for example, accidental deletion, repartition disk, partition software goes wrong, corrupted partition table, virus, etc. Typical features of partition loss issue: partition's drive letter is missing in Windows File Explorer and the partition is shown "Unallocated" in Disk Management. The lost partition and its files cannot be seen by the operating system. In many cases, as long as there is no further damage to the lost partition, it can be recovered by CuteRecovery.

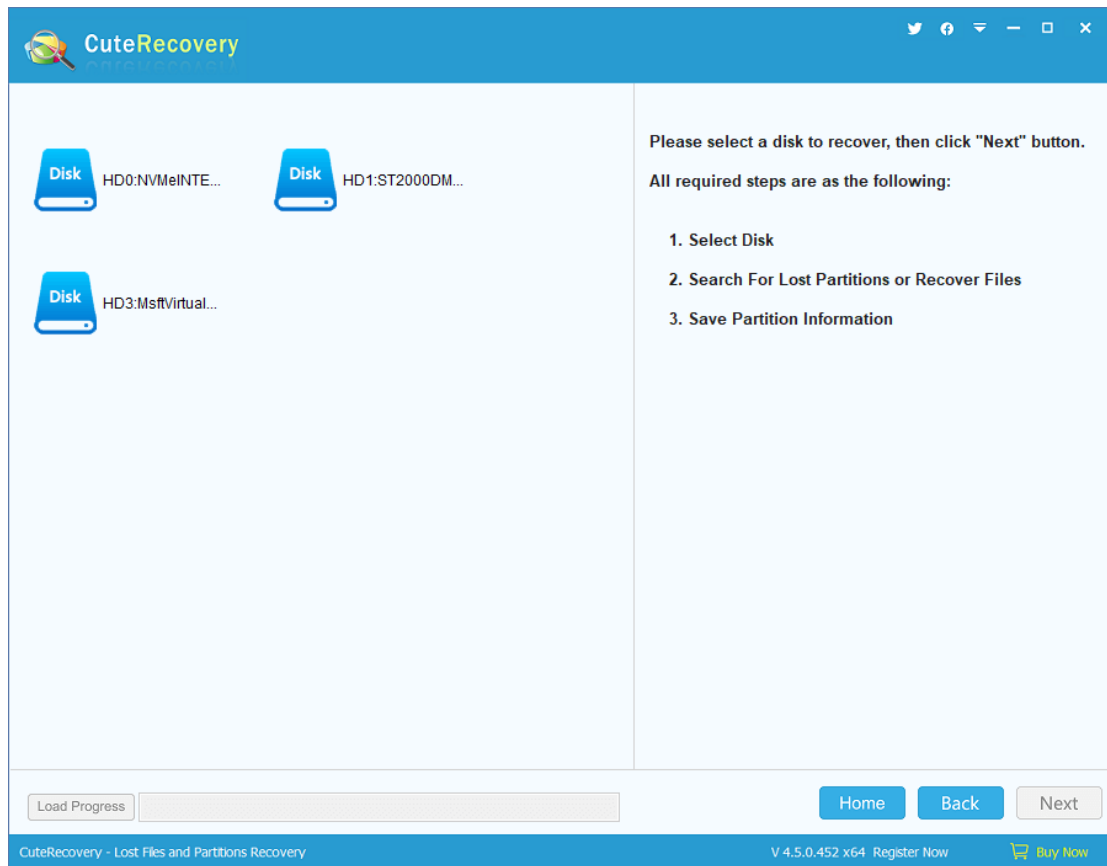
Partition's information such as size, type or location is saved in partition table. When a partition is deleted, partition information mentioned above will be deleted from the partition table, but data in the partition won't be deleted. Therefore, when a partition gets lost, it is possible to recover its information by certain techniques. CuteRecovery provides such a function.

Comparing with other partition recovery software, CuteRecovery has its unique techniques. When CuteRecovery finds out a lost partition, it displays all the properties and files of the partition so that you can browse files and folders to judge whether the partition is correct. All the information is saved in memory instead of the disk, which can prevent further damage caused by incorrect operations. Detailed information is shown in the following part.

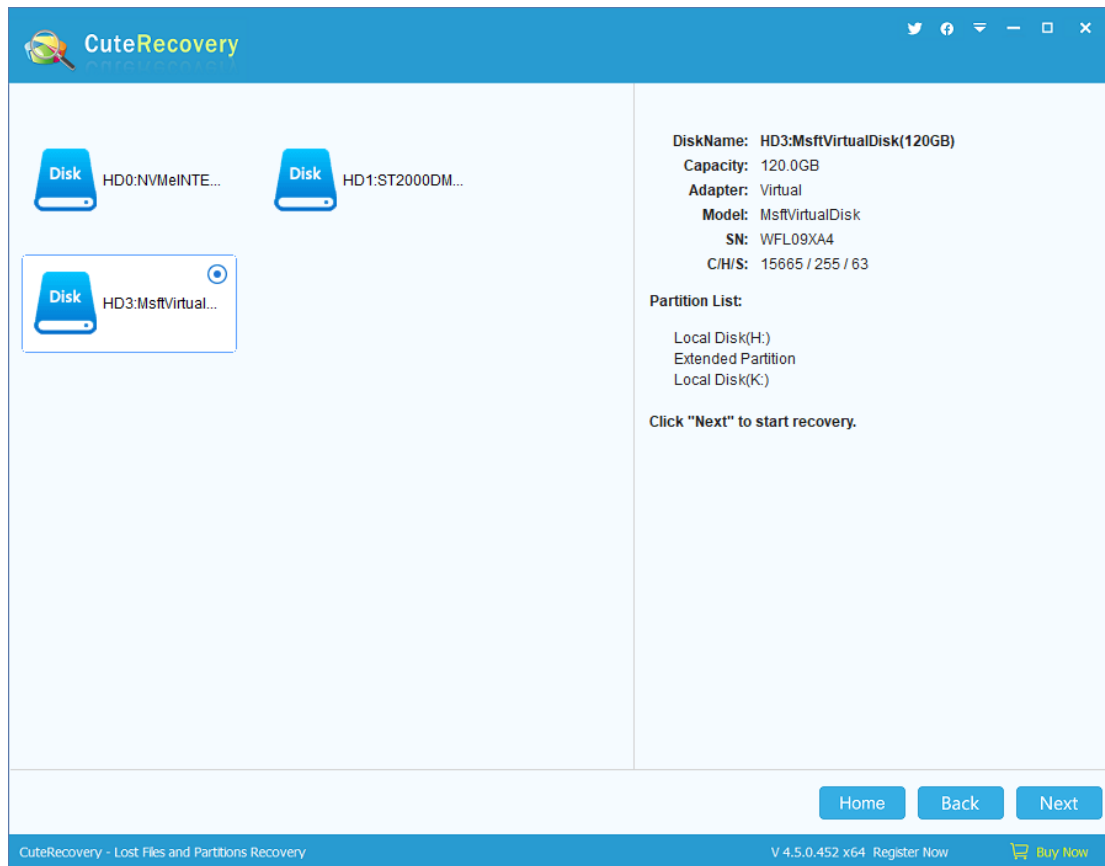
To recover lost partitions, please click the button "Recover Lost Partitions" on the main interface.



CuteRecovery finishes partition recovery in 3 steps: Select Disk, Search For Lost Partitions or Recover Files, and Save Partition Information.



Select the disk that needs recovering partitions and information of the disk (capacity, model, current partitions, etc.) will be displayed on the right part of the panel as follows:

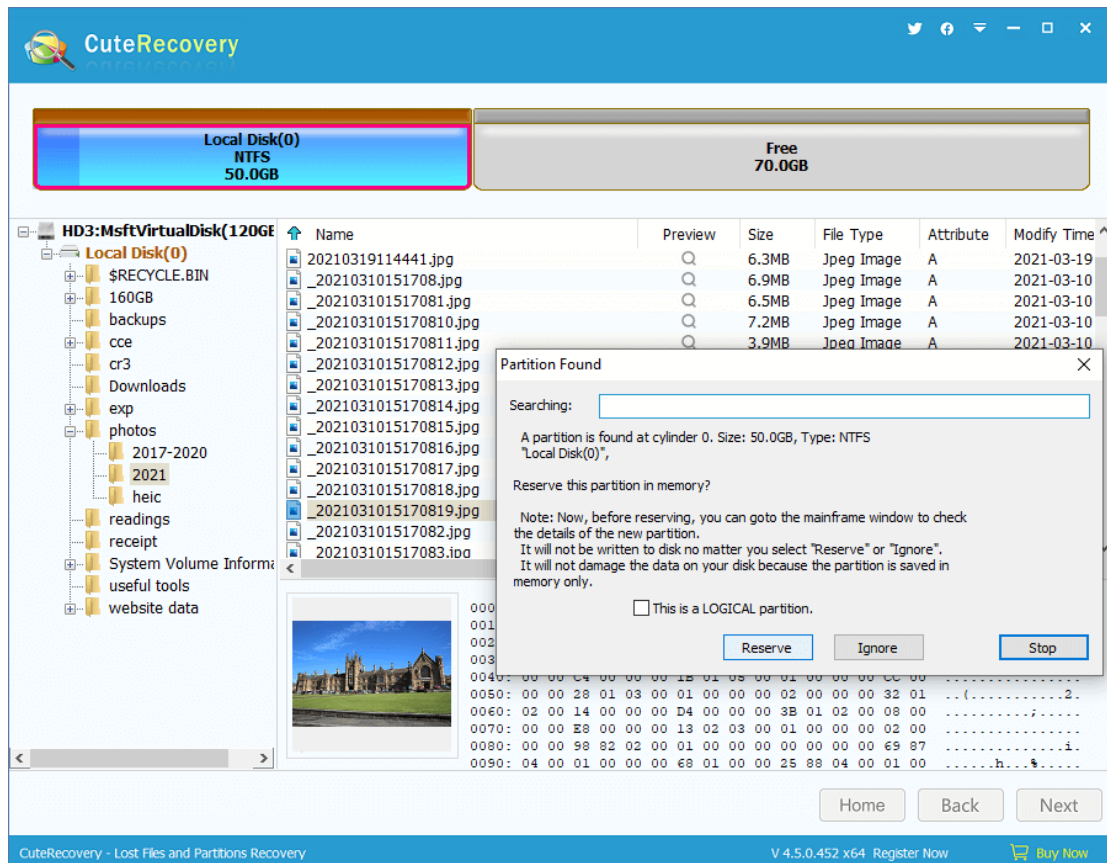


Click "Next" to start searching. CuteRecovery will show a searching progress window as in the following picture. When a partition is found, it'll be displayed on the interface. Please judge whether it is correct before clicking "Reserve" or "Ignore" on the "Partition Found" dialog box.

To judge whether the partition is correct, please check its information and files. You can browse and preview files without closing the dialog box.

If it is the partition you want to recover, please click "Reserve" and the partition will be saved in memory not disk; if it is not the partition you are

looking for, click "Ignore" to skip this partition. All these operations are just saved in memory and the searching process is read only.



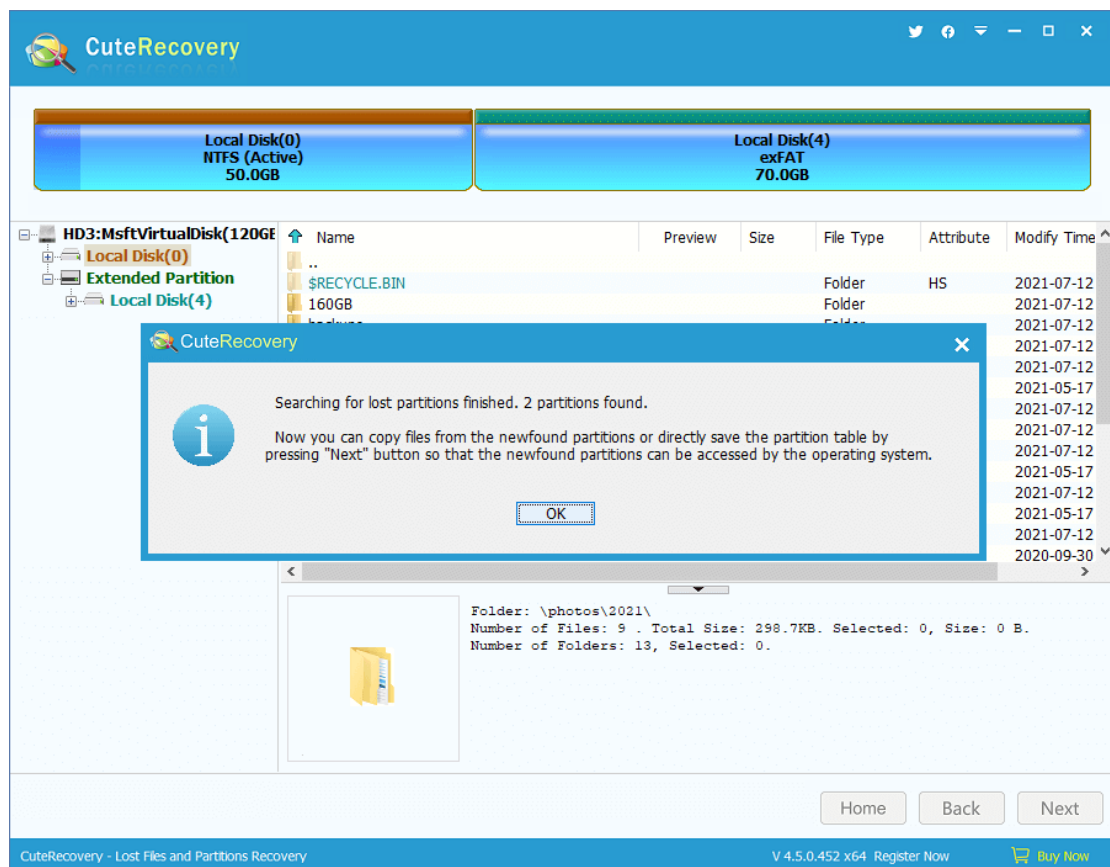
Tips:

Click "Reserve" or "Ignore" for each partition found by the software until the scanning finishes. To judge whether the partition is correct, please check its information and files. You can browse and preview files without closing the dialog box.

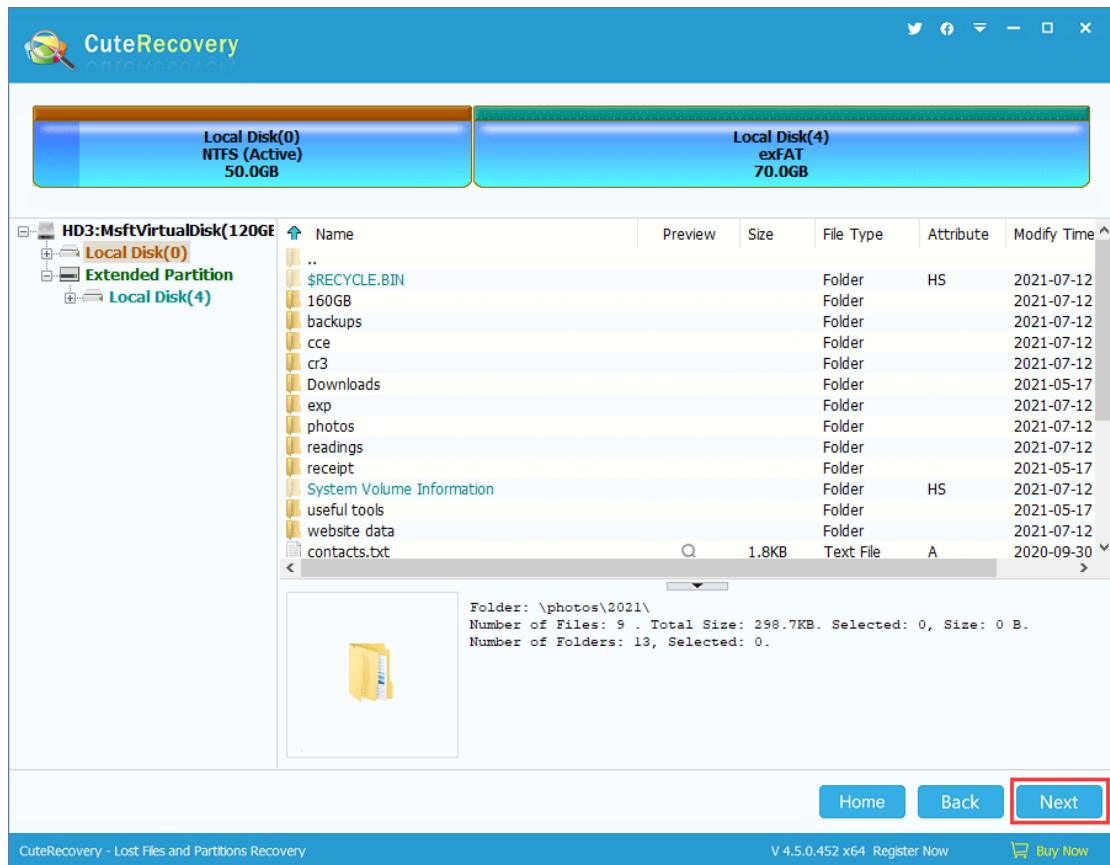
If CuteRecovery finds out the extended partition table during the searching process, all the logical partitions of the partition table will be displayed at the same time. If all the logical partitions are the ones you want to recover, please

click "Reserve" otherwise click "Ignore". CuteRecovery will search for every logical partition. Most of the cases, CuteRecovery can identify the partition is primary or logical, but it is not always right. You can assign the partition type according to your memory. There is a check box "This is a PRIMARY partition" or "This is a LOGICAL partition" on the "Partition Found" dialog box. You can check the option to correct the partition type.

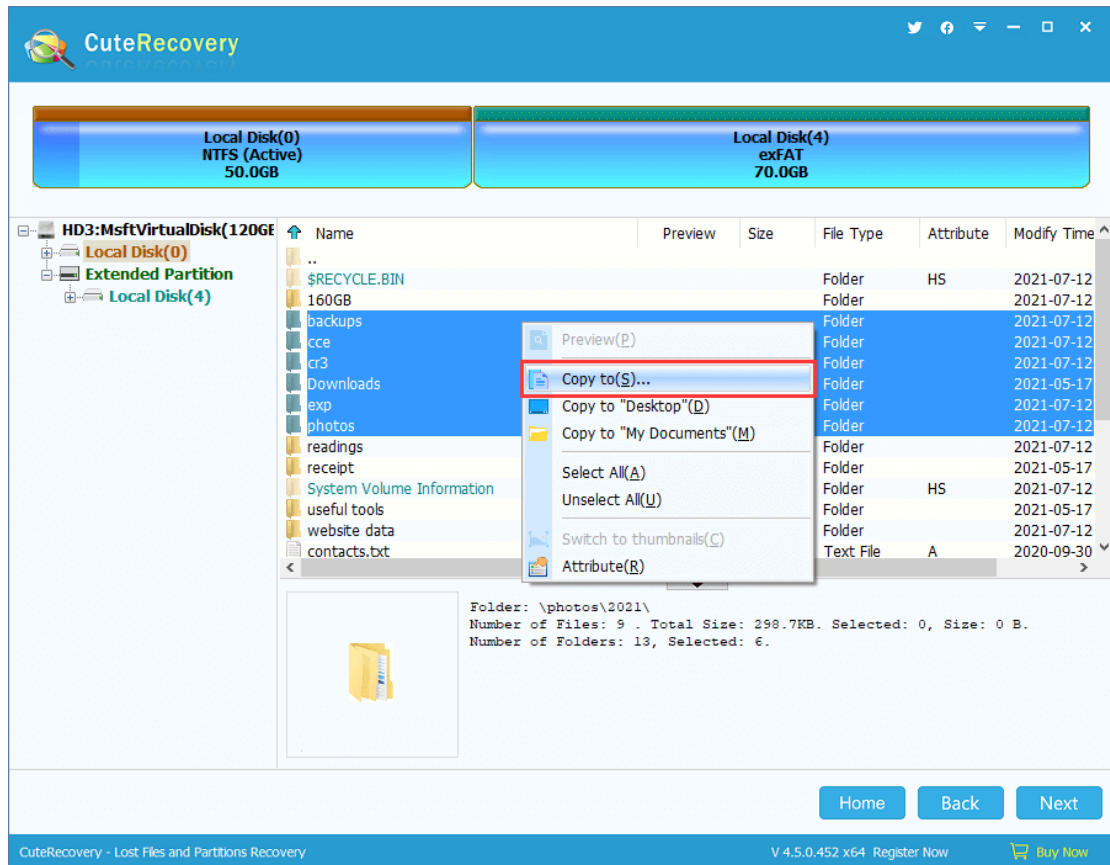
Finishing searching, CuteRecovery will report the number of partitions it finds out. Please click "OK" and you can check the partitions and their files.



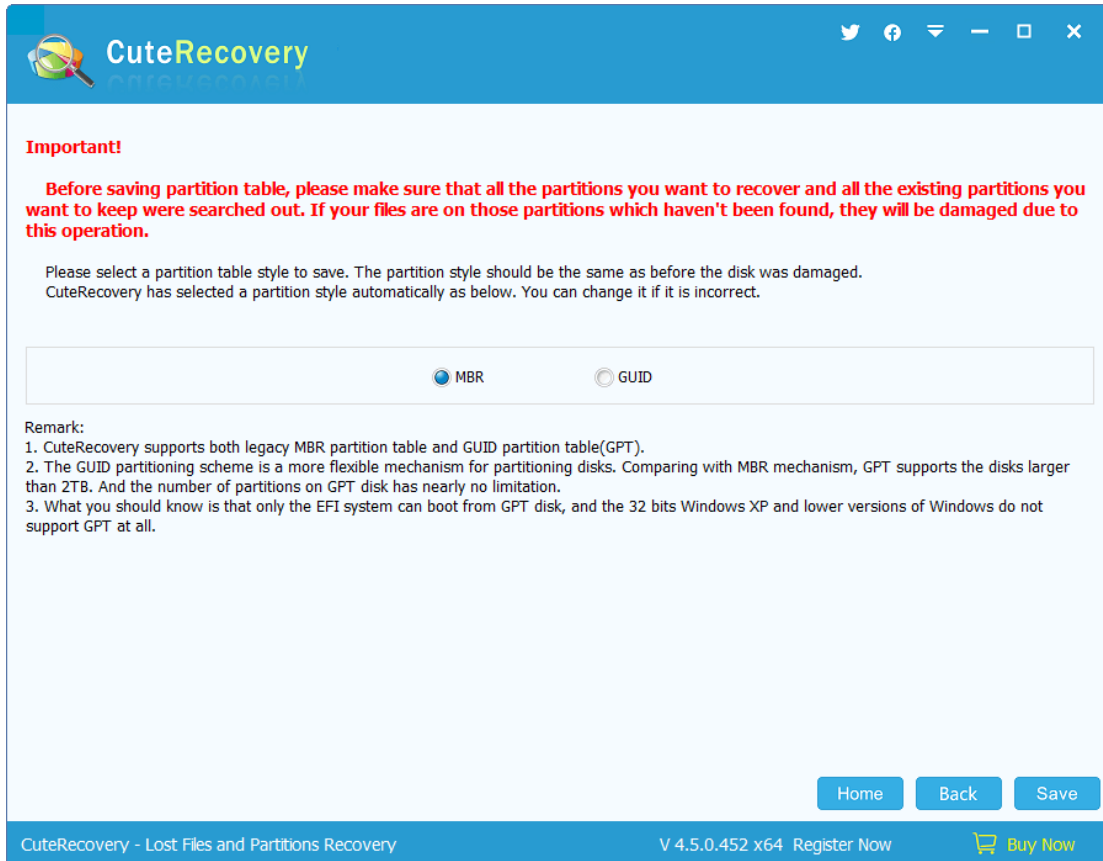
If all lost partitions have been found, please click "Next" to save partition table.



In addition to saving partition table, you can also copy files by using the context menu: [Copy files through context menu.](#)



To save the partition table, please click "Save" button and the recovery result will be saved to disk. Then you can access these partitions and its files in Windows File Explorer.



The screenshot shows the CuteRecovery application window. At the top, there is a blue header with the CuteRecovery logo and social media icons. Below the header, a red "Important!" warning is displayed, advising users to ensure all partitions to be recovered and existing partitions to be kept are searched out before saving the partition table. Below the warning, a message states that the user should select a partition table style to save, and that CuteRecovery has selected a style automatically. A radio button interface allows the user to choose between MBR (selected) and GUID. A "Remark:" section provides additional information about MBR and GUID partitioning schemes. At the bottom right, there are "Home", "Back", and "Save" buttons. The footer of the application window displays "CuteRecovery - Lost Files and Partitions Recovery", the version "V 4.5.0.452 x64", a "Register Now" link, and a "Buy Now" button.

Important!

Before saving partition table, please make sure that all the partitions you want to recover and all the existing partitions you want to keep were searched out. If your files are on those partitions which haven't been found, they will be damaged due to this operation.

Please select a partition table style to save. The partition style should be the same as before the disk was damaged. CuteRecovery has selected a partition style automatically as below. You can change it if it is incorrect.

MBR GUID

Remark:

1. CuteRecovery supports both legacy MBR partition table and GUID partition table(GPT).
2. The GUID partitioning scheme is a more flexible mechanism for partitioning disks. Comparing with MBR mechanism, GPT supports the disks larger than 2TB. And the number of partitions on GPT disk has nearly no limitation.
3. What you should know is that only the EFI system can boot from GPT disk, and the 32 bits Windows XP and lower versions of Windows do not support GPT at all.

Home Back Save

CuteRecovery - Lost Files and Partitions Recovery V 4.5.0.452 x64 Register Now Buy Now

CuteRecovery supports saving partition table as the traditional type MBR format as well as the GUID format. Before saving partition table, Cute Recovery will select a partition table type according to the disk and its partitions. If it chooses the wrong partition table type, you can change it to the original type.

Very Important: Before saving partition table, please make sure that all the partitions you want to recover and all the existing partitions you want to keep have been searched out. If your files are on those partitions which haven't been found, they will be damaged due to "Save Partition Table" operation.

To save the partition table, please click "Save" button and the recovery result will be saved to disk. Then you can access the partition and its files.

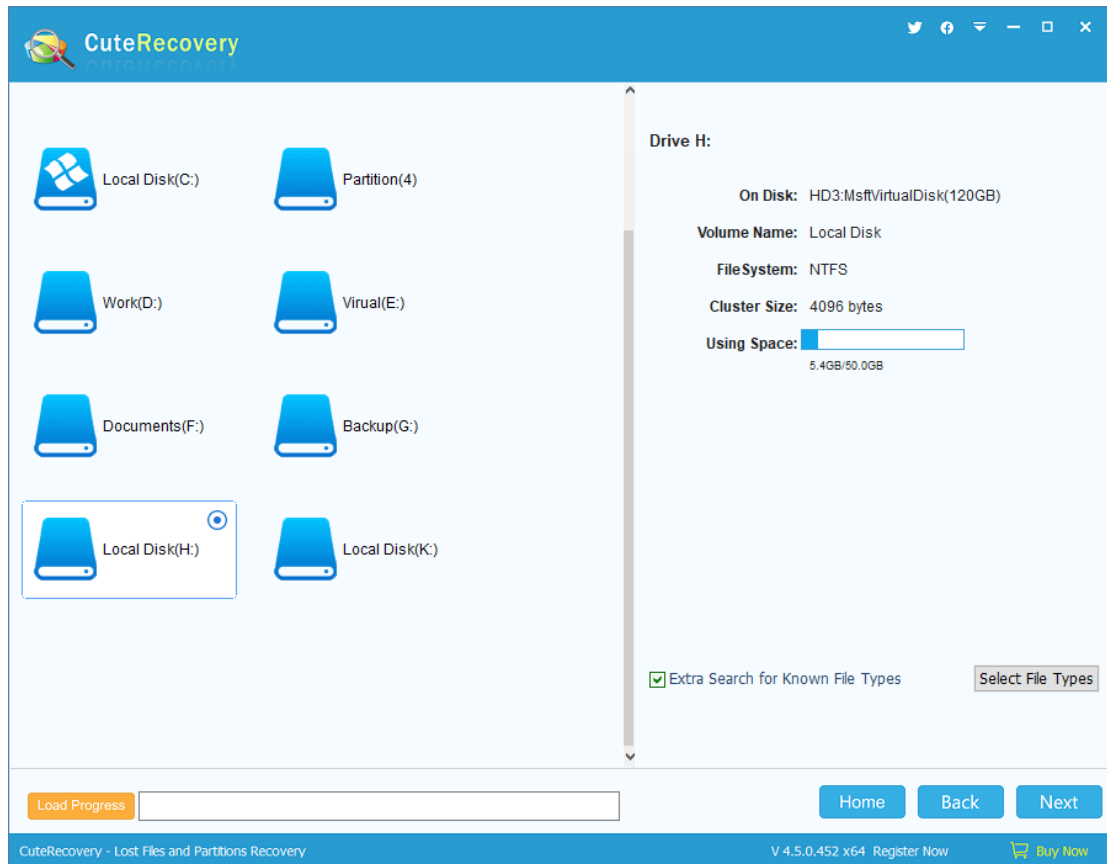
Recover Files By Type

CuteRecovery recovers data by scanning disks or partitions continuously and analyzing internal file structure. This recovery mode is usually used to rescue data when the file system is badly damaged and file directory cannot be rebuilt by normal file recovery function.

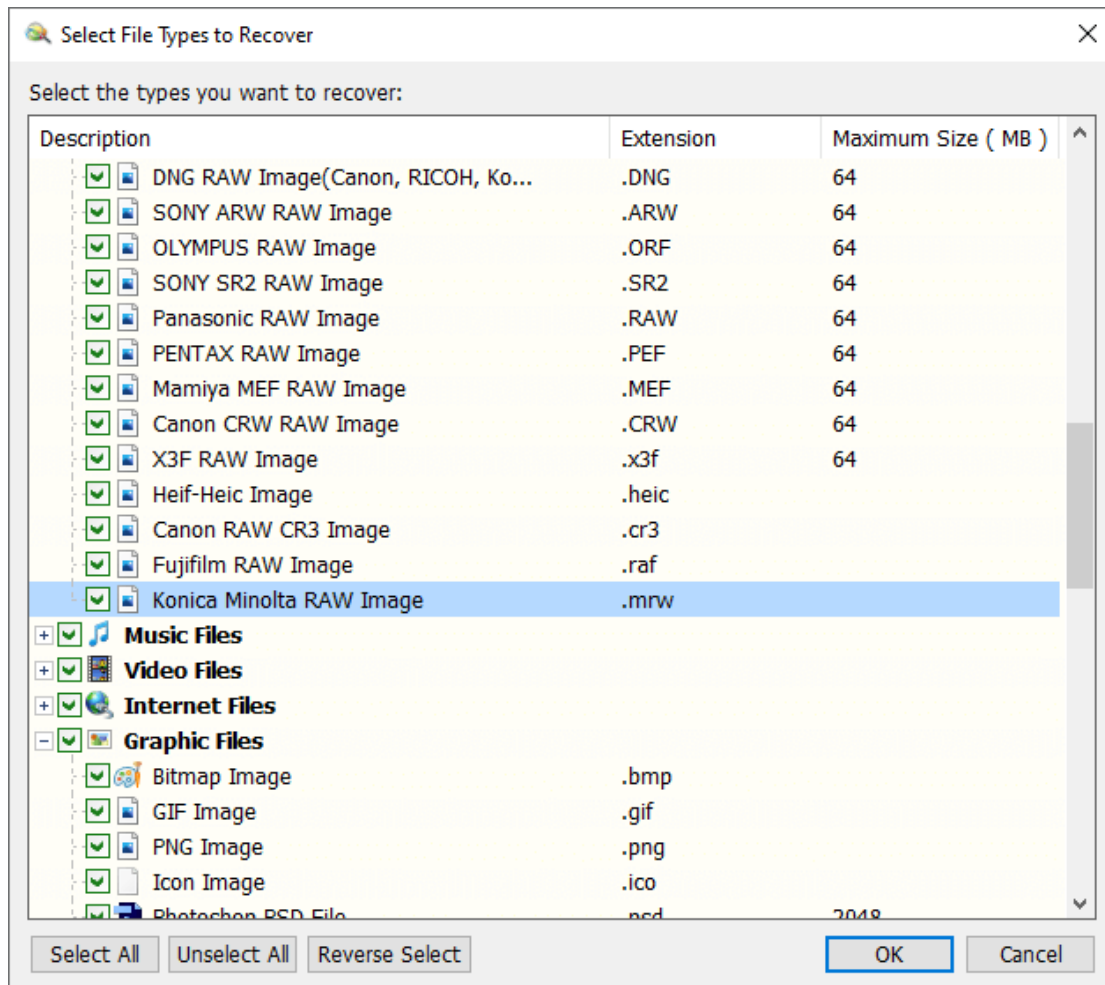
For example, a JPG file, when saved, always begins with the hexadecimal format header "FFD8FFE0" which is followed by its further information such as width, height and camera information. When CuteRecovery finds out "FFD8FFE0", it'll recover the following data as a JPG file.

After confirming the file header, CuteRecovery starts to analyze file structure and identify the size through certain algorithm; it goes on scanning until the file is recovered.

You can use the function when you "Recover Files From Partition" and "Recover Files From Disk". The following takes the "Recover Files From Partition" as an example:

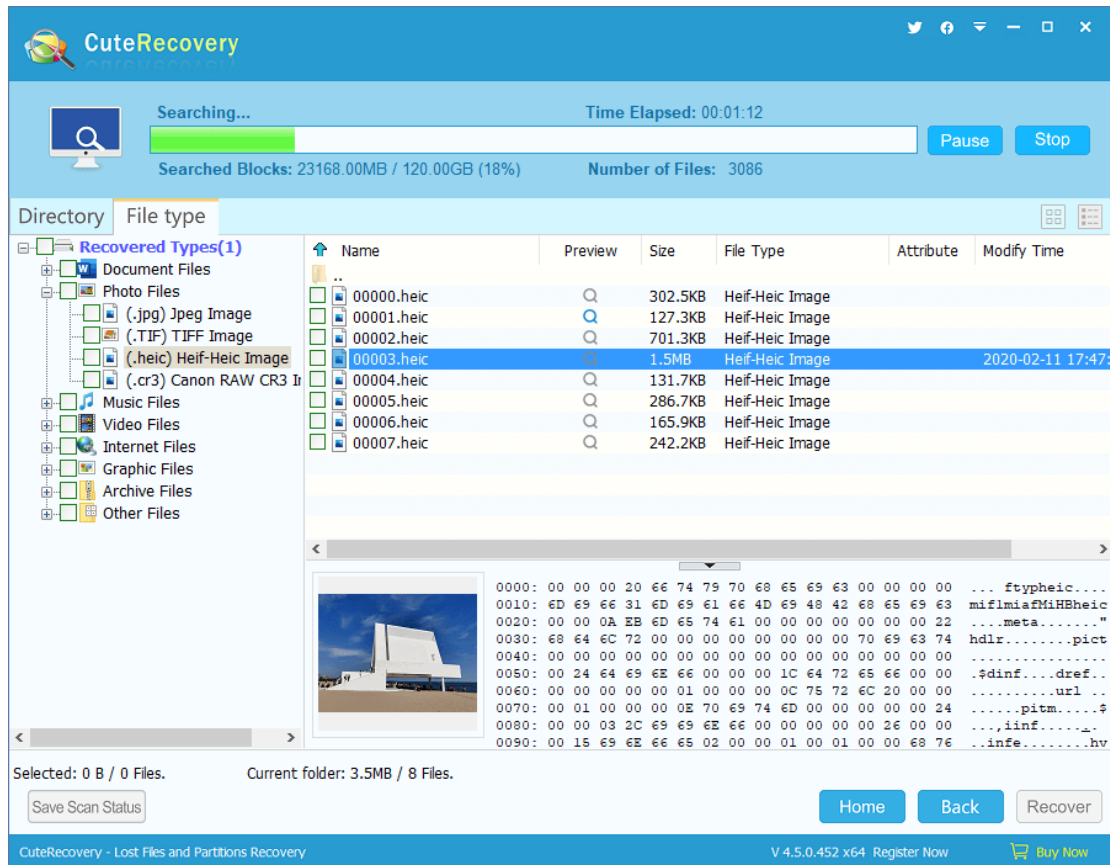


When you select partition on the first step of "Recover Files From Partition", you can check the option "Extra Search for Known File Types" and click the button "Select File Types" to open the following dialog box:



Select all the types you want to recover and click "OK". In addition, you can click the corresponding column header to sort the types for fast locating file types.

Finishing scanning, CuteRecovery will display a tab named "File type" and put all files recovered by type in this part.



Recovered files are classified by type and if files of a certain type exceed 1000, they will be put in another folder automatically.

You need to note that files recovered by this method loss their original names, for file names are saved in file system structure which is not analyzed when you recover files by type; all the recovered files are named by sequence numbers. To check whether these recovered files are the ones you want to recover, you have to preview them one by one.

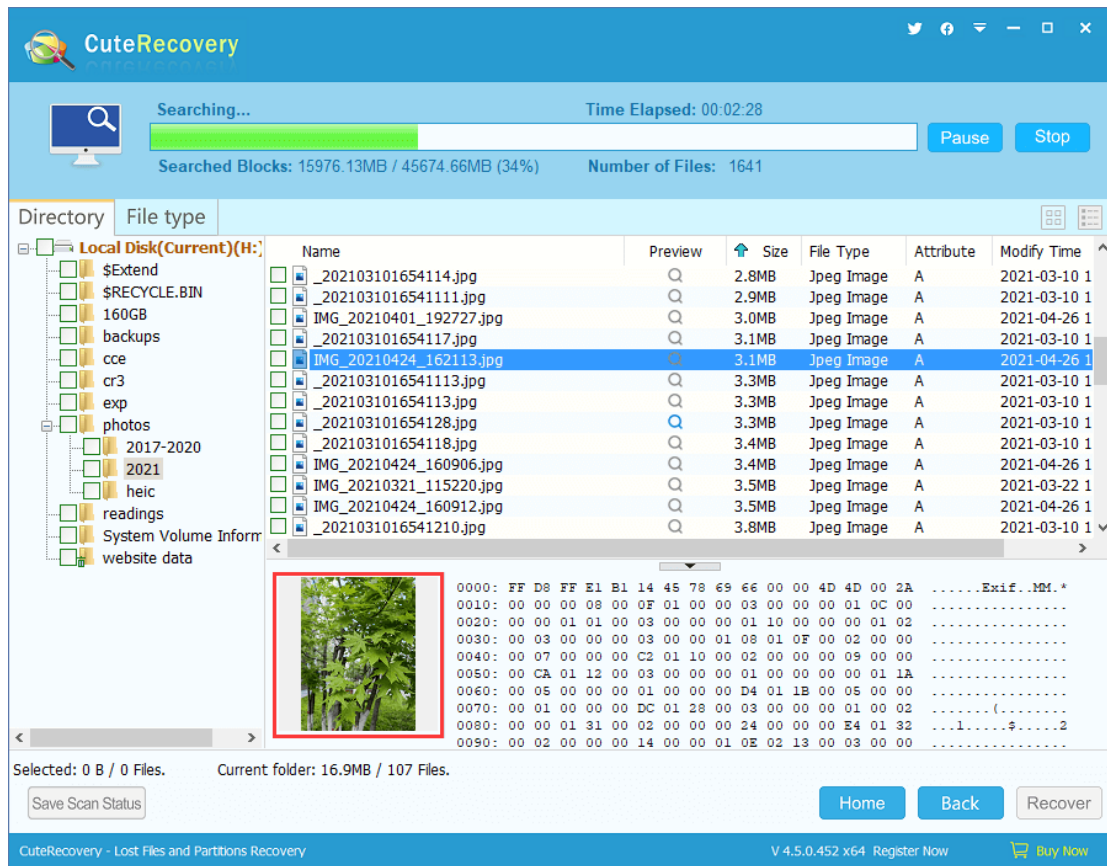
Confirm files you want to recover and check them to copy them out.

The process of recovering files by type in the function "Recover Files From Disk" are the same as above.

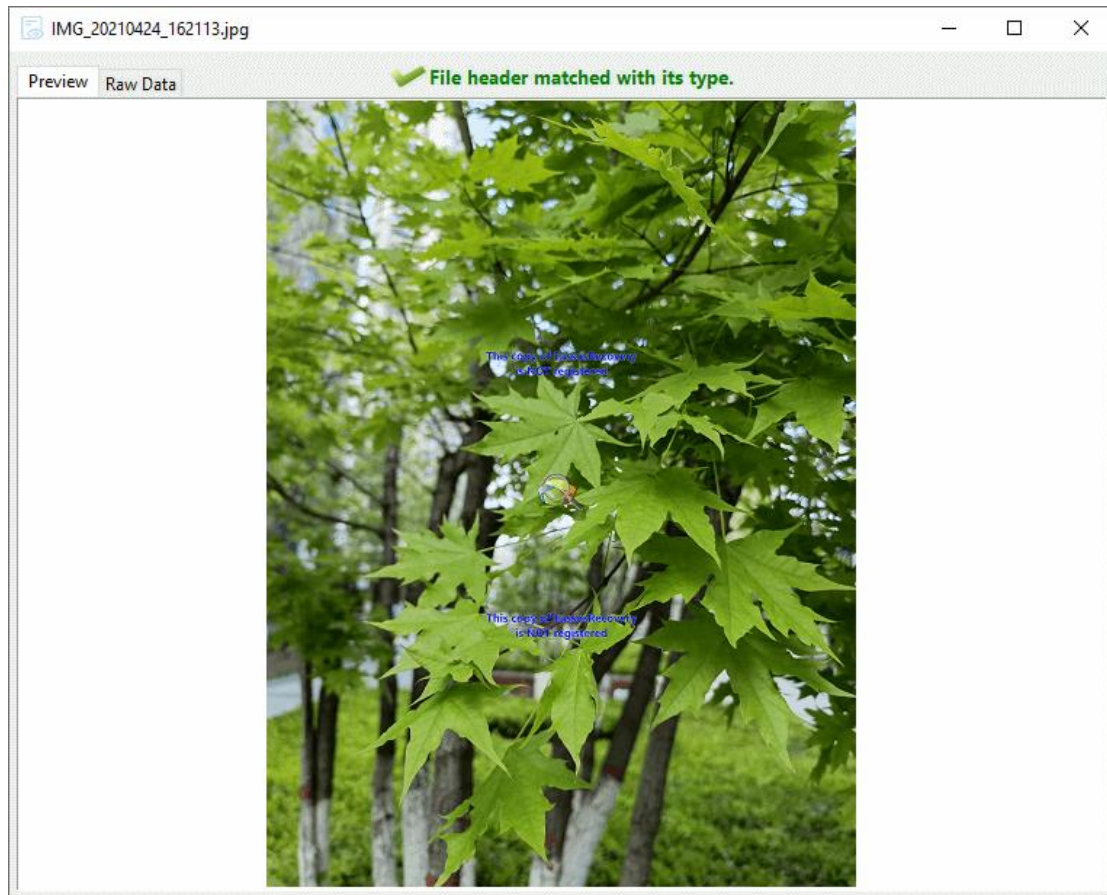
Recovered File Preview

In many cases, you need to know whether the recovered file is the one you want to recover or whether the content is correct. This is when the preview function comes in handy! CuteRecovery can not only preview all types of pictures and text files but also it can preview Microsoft Office documents, video and audio files, which makes the file preview function much more practical!

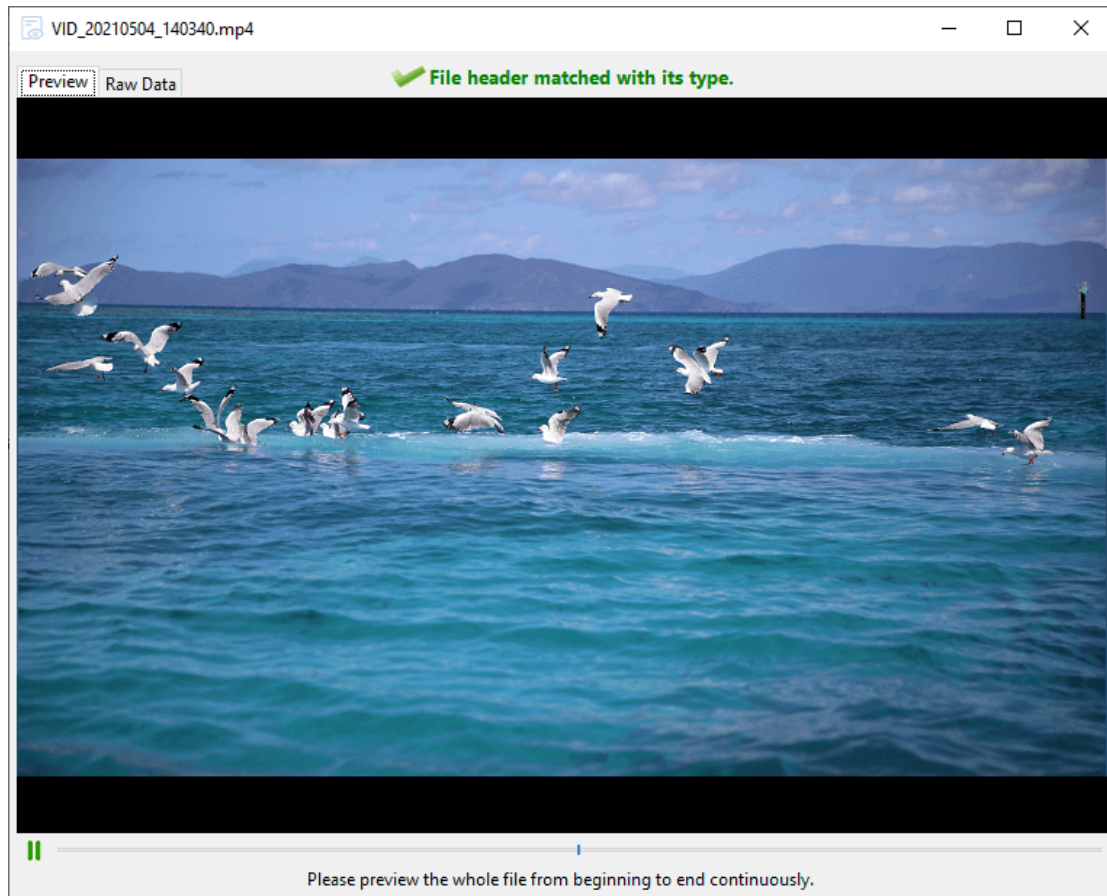
After selecting a data recovery mode and scanning the disk or partition, files are listed while scanning is going, and then you can examine files by previewing them. When you click a file on the file list panel, its small preview image shows on the bottom as follows:



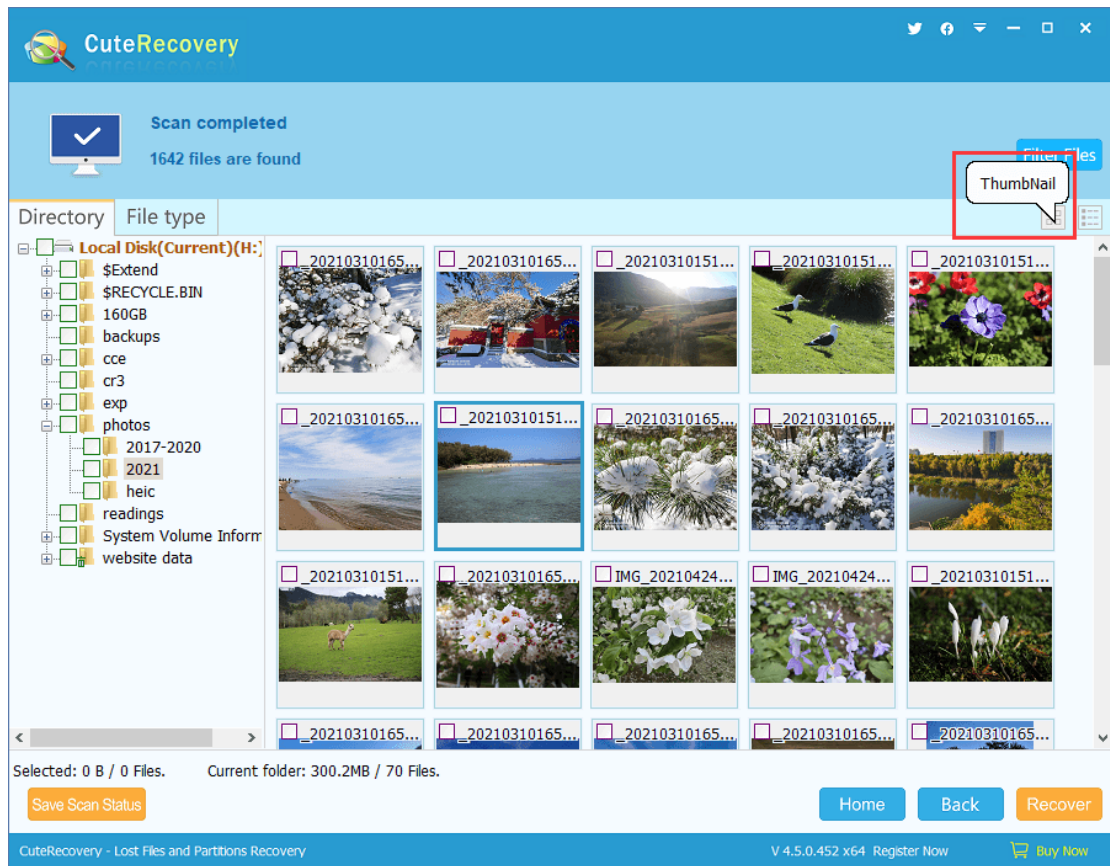
If you want to preview the file in real size, double click it and CuteRecovery will pop up a large preview window, as shown below:



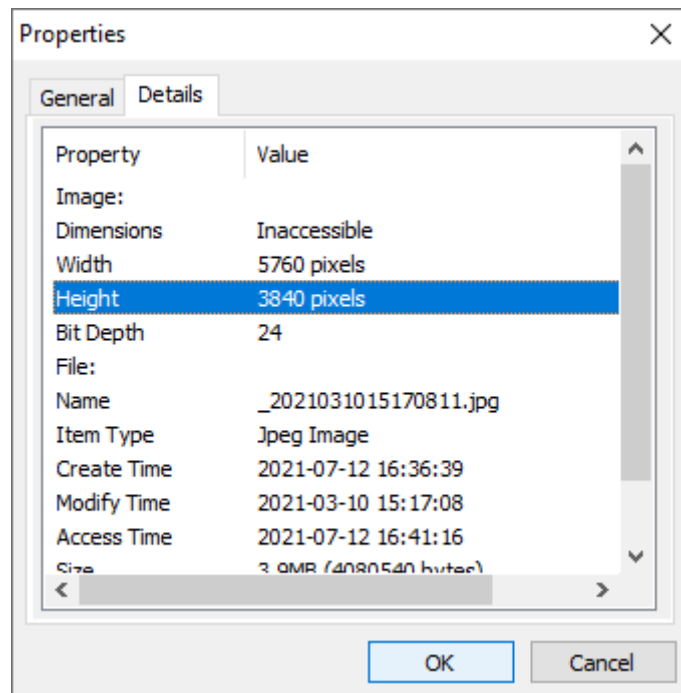
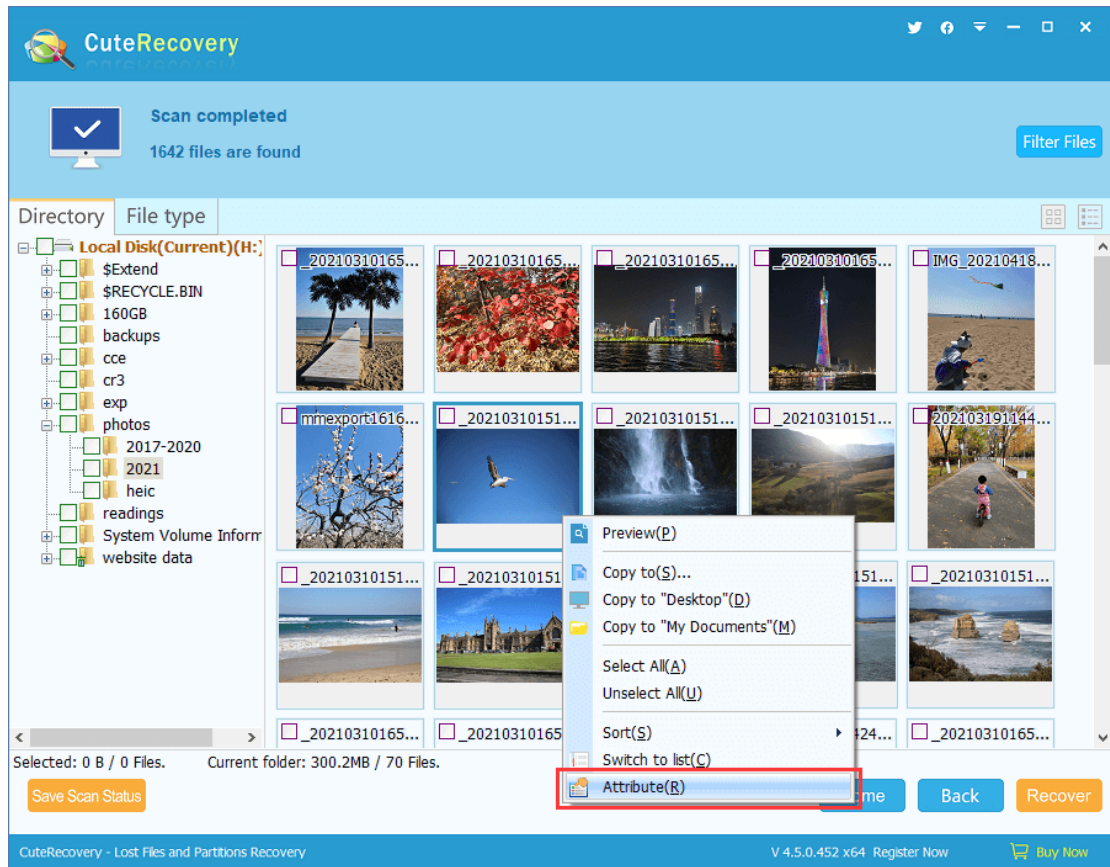
CuteRecovery not only supports previewing image files and documents such as PDF, Word, Excel and PPT, but also supports previewing video files, as shown below:



CuteRecovery adds the feature of thumbnail view of recovered files. Click the "Thumbnail" button to switch file list to thumbnail model which is able to review large batches of pictures and other files with small previews. Besides, you can double-click file to open it as follows:

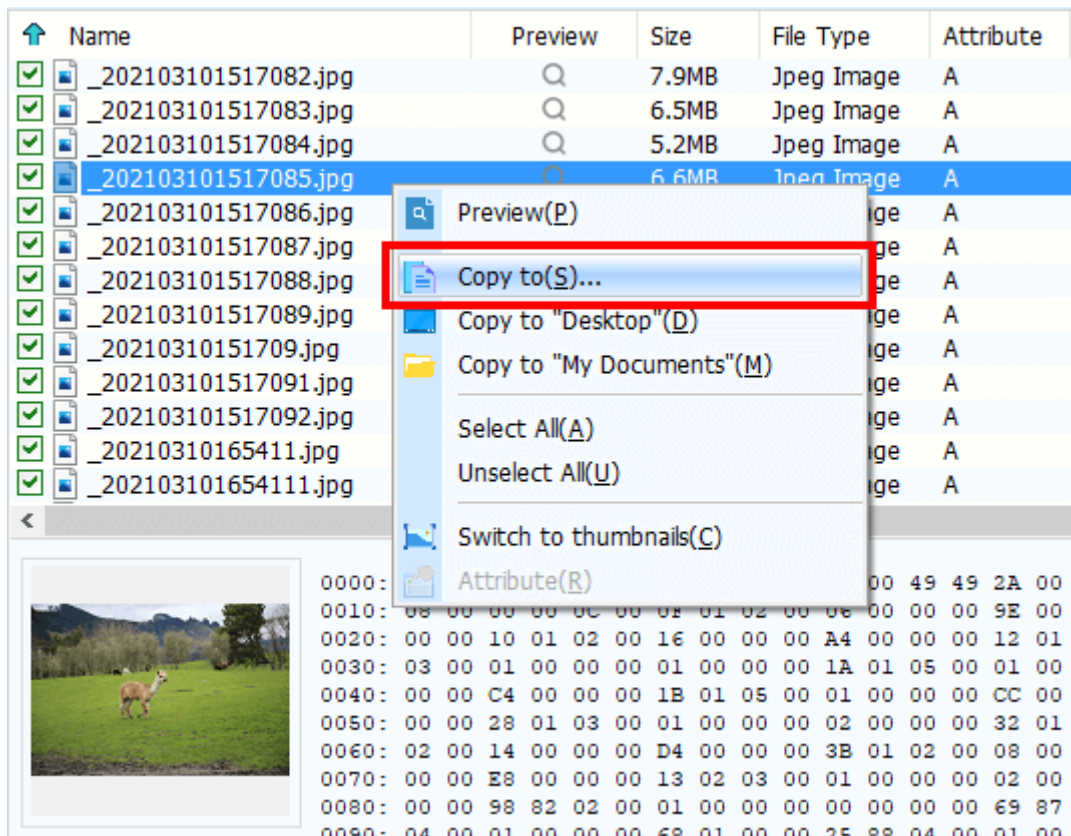


In the thumbnail mode you can right-click a file to view property menu. File properties are displayed in a window which is similar to system properties window, as picture below:

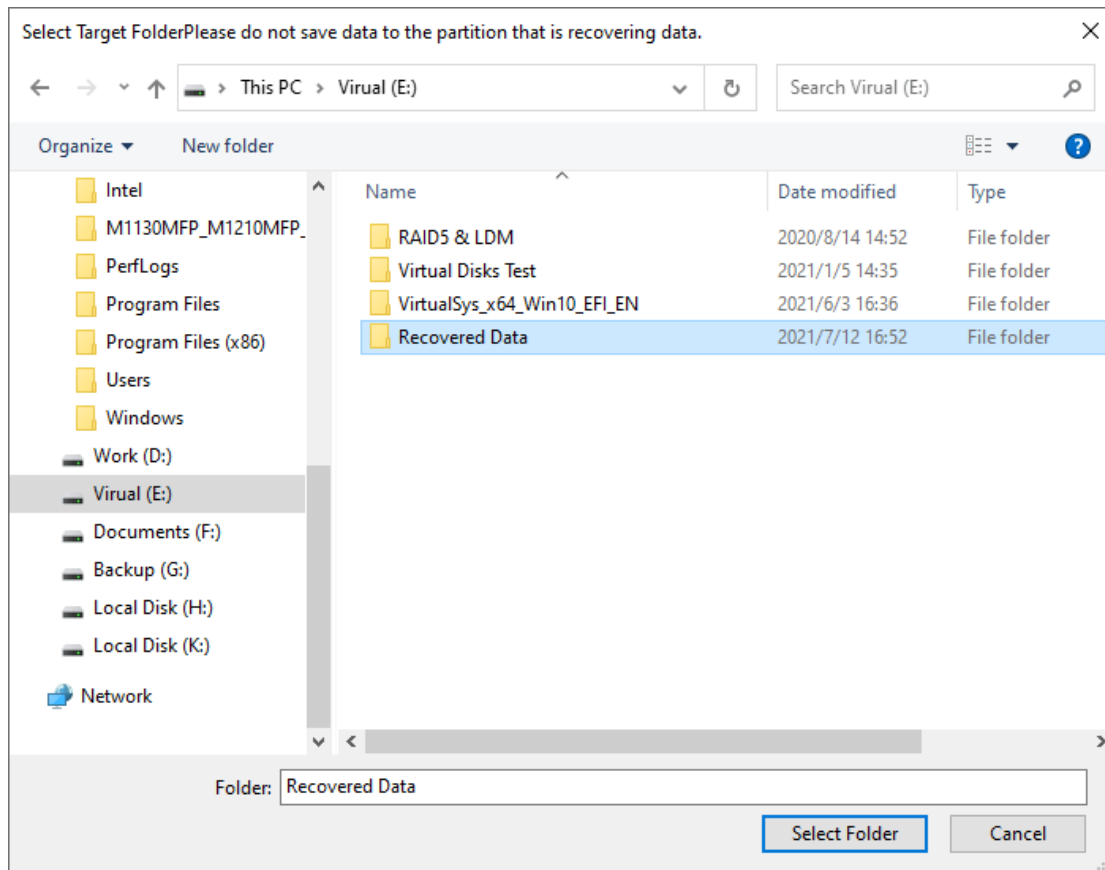


Copy Files by Context Menu

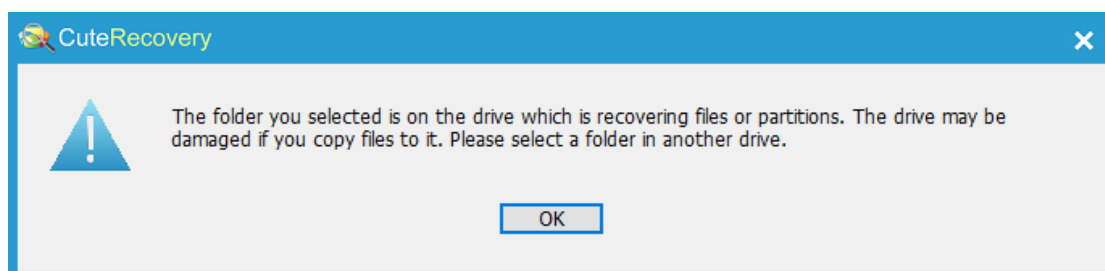
When CuteRecovery finishes scanning lost files or partitions, it displays all files it finds out. To recover these files, you have to copy them out. Please check files and folders you want to recover and right click mouse button to pop up the menu:



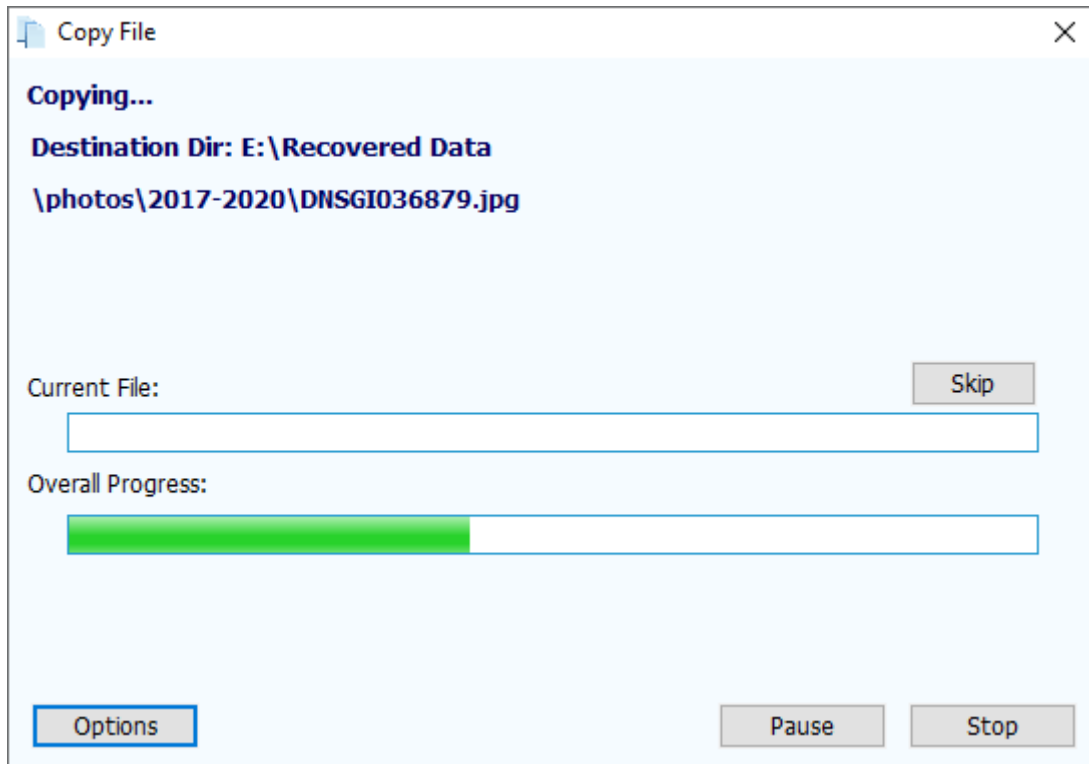
If you select "Copy to", CuteRecovery will show the "Select Target Folder" dialog box; please select a folder to save files.



To avoid secondary destruction, please do not set the target folder to the partition that is recovering data. If you do select such a folder, CuteRecovery will pop up the following warning message:



Please select another folder to avoid damaging the partition which is recovering data. After selecting a folder, CuteRecovery starts to copy files:



In the copying process, you can click "Stop" at any time to stop copying files. When the copy is done the button "Stop" disappears and buttons "Complete" and "Details" show up.



You can click "Details" to see "File Copy Report" and then click the button "Save" to save the report to a text file.

File Copying Report

File	Status	Error Type
\photos\2017-2020\00897.jpg	OK	
\photos\2017-2020\149451_341079575947733_1717176403_n.jpg	OK	
\photos\2017-2020\44316.jpg	OK	
\photos\2017-2020\593461.jpg	OK	
\photos\2017-2020\artensoft_com_photomix1_0191.jpg	OK	
\photos\2017-2020\artensoft_com_photomix1_1902.jpg	OK	
\photos\2017-2020\artensoft_com_photomix1_2078.jpg	OK	
\photos\2017-2020\artensoft_com_photomix1_2386.jpg	OK	
\photos\2017-2020\artensoft_com_photomix1_3340.jpg	OK	
\photos\2017-2020\artensoft_com_photomix1_3886.jpg	OK	
\photos\2017-2020\DNSGI03687.jpg	OK	
\photos\2017-2020\DNSGI036871.jpg	OK	
\photos\2017-2020\DNSGI0368711.jpg	OK	
\photos\2017-2020\DNSGI036872.jpg	OK	
\photos\2017-2020\DNSGI0368722.jpg	OK	
\photos\2017-2020\DNSGI036873.jpg	OK	
\photos\2017-2020\DNSGI036874.jpg	OK	
\photos\2017-2020\DNSGI03687445.jpg	OK	
\photos\2017-2020\DNSGI0368745.jpg	OK	
\photos\2017-2020\DNSGI036875.jpg	OK	
\photos\2017-2020\DNSGI0368755.inn	OK	

Copying Result:
Target Path: "E:\Recovered Data"
65 files copied. Total Size: 970.6KB, 993892 bytes.

Save Exit

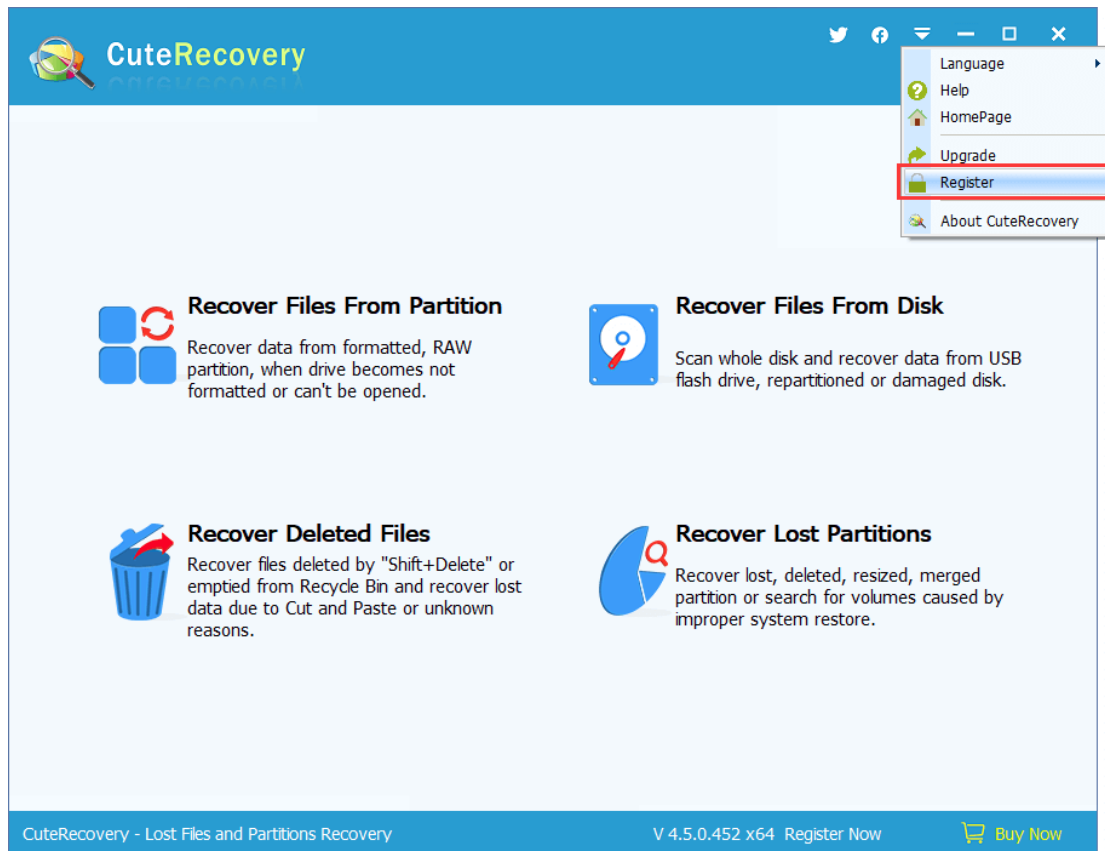
Register CuteRecovery

CuteRecovery is shareware, and you can download and try it for free.

If it is not registered, you can use it to search for data and preview files, such as pictures and text files; for those files that cannot be previewed will be shown in hexadecimal format, and you can only recover files whose size are less than dozens of KBs; when recovering lost partitions, the partition table cannot be saved.

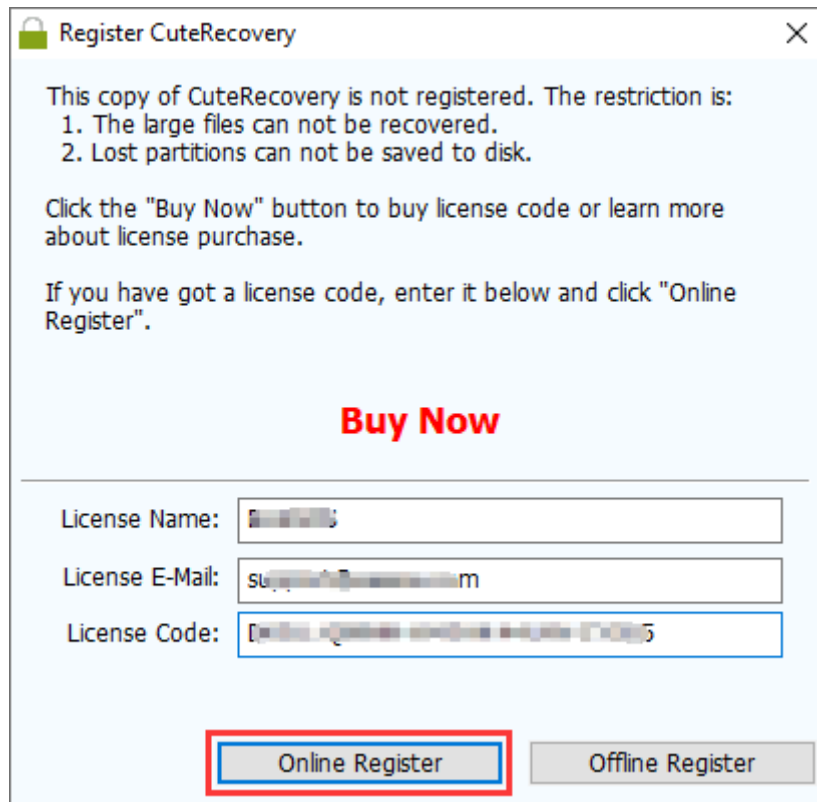
If you love this program please buy and register. For how to buy this software, please visit the software website on "<https://www.eassos.com/buy.php>".

After getting the registration code, please select "Register" on the menu as below:



Method 1: Register CuteRecovery Online

Enter the License Code, License Name and License Email then click "Online Register" button. When you register successfully, the "Register CuteRecovery" dialogue box will be closed automatically.



Register CuteRecovery

This copy of CuteRecovery is not registered. The restriction is:

1. The large files can not be recovered.
2. Lost partitions can not be saved to disk.

Click the "Buy Now" button to buy license code or learn more about license purchase.

If you have got a license code, enter it below and click "Online Register".

Buy Now

License Name:

License E-Mail:

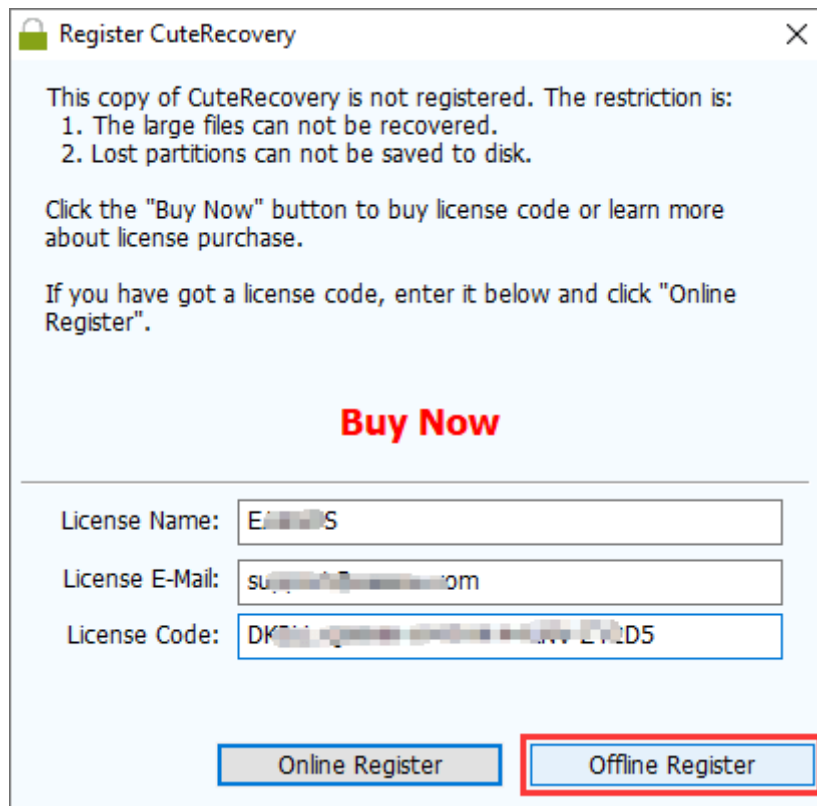
License Code:

Please note that the "License Name" and "License Email" you enter must be exactly the same as what you offered when you bought the license code.

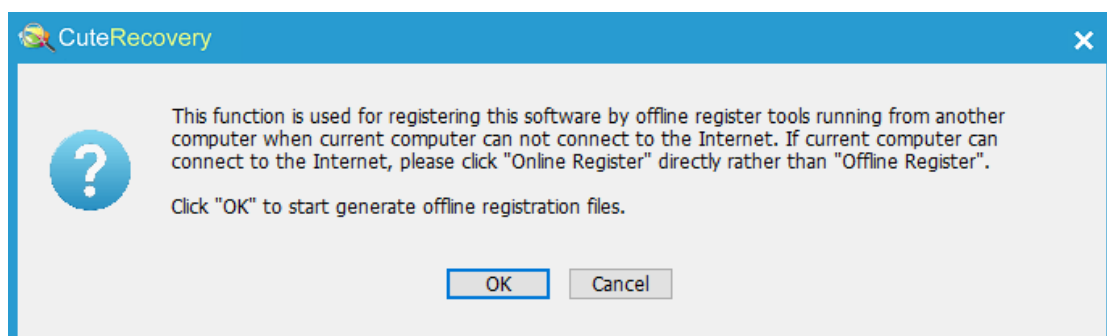
Method 2: Register CuteRecovery Offline

If the computer you want to recover data cannot connect to the Internet, you can use this method to activate the software.

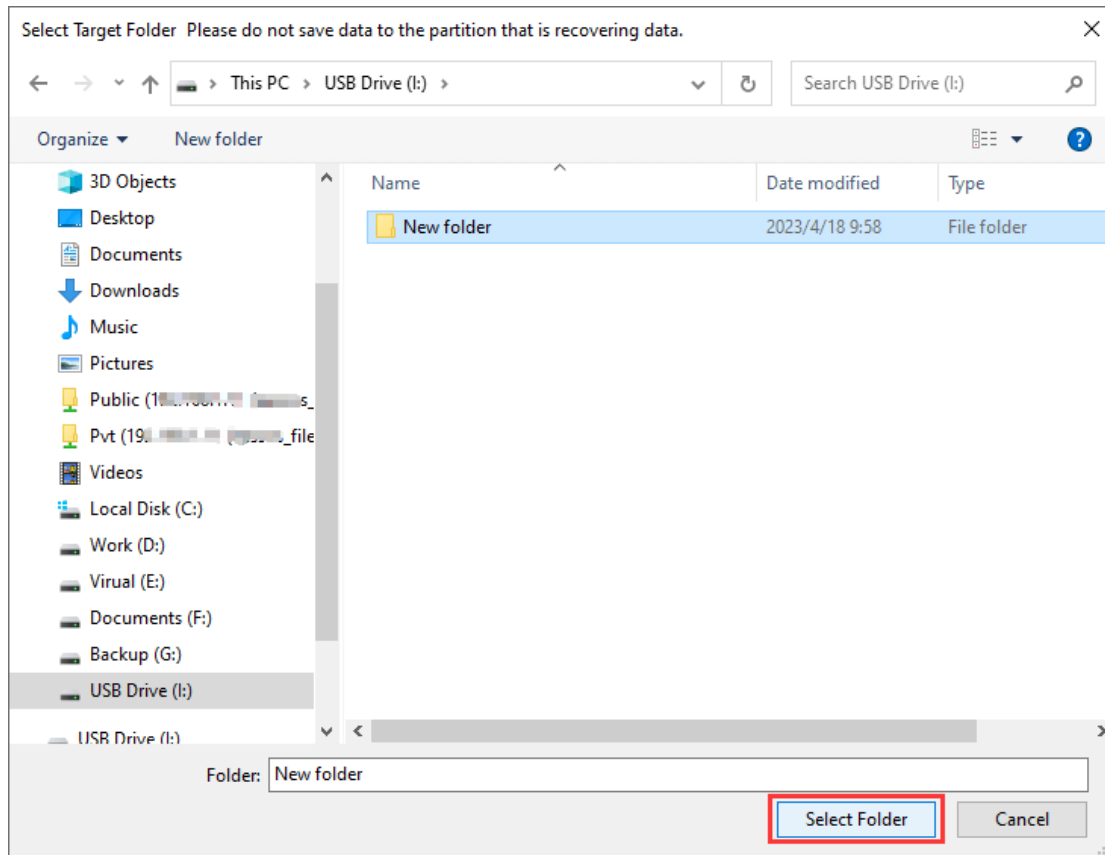
1. Enter the License Code, License Name and License Email then click "Offline Register" button.



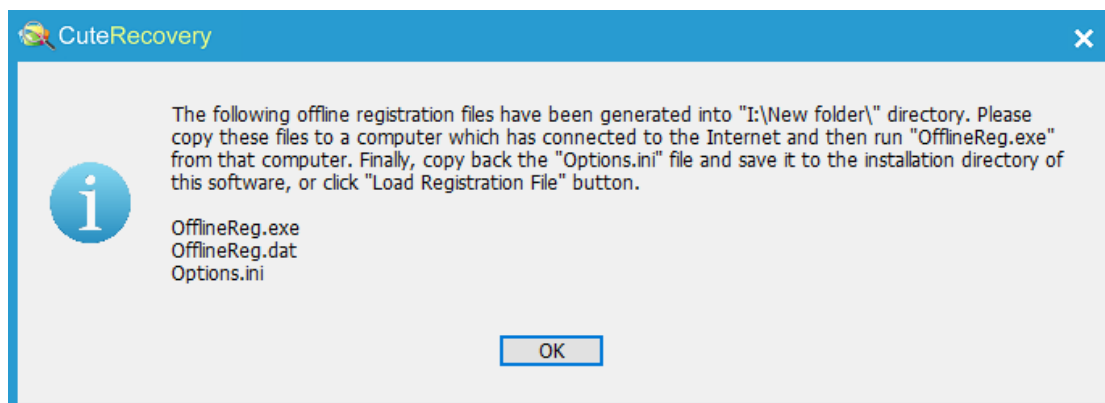
2. Click the "OK" button to generate offline registration files.



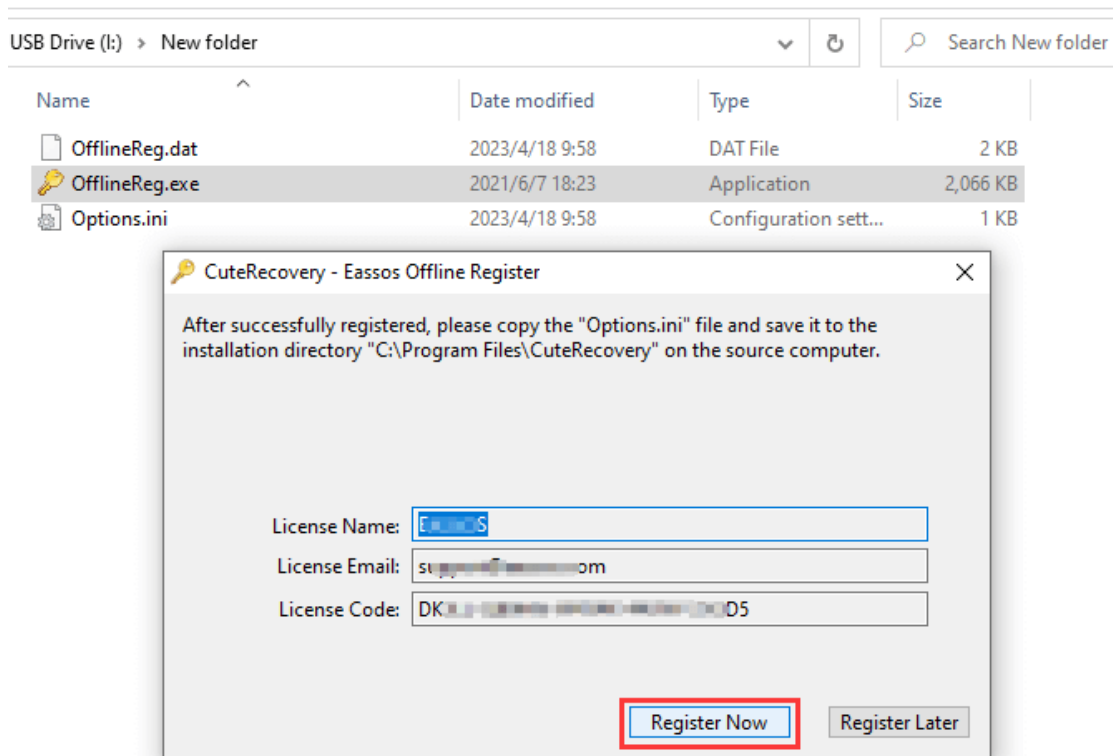
Specify a location to save offline registration files. You can save these files on a USB flash drive.



3. Click "OK" button and move these files to another computer which can access the Internet.



4. Double click the "OfflineReg.exe" file on the computer that can connect to the Internet and click "Register Now" button.



5. Copy the new "Options.ini" file to back to the folder where CuteRecovery is installed and replace the existing one. Then the software will be registered successfully.

CuteRecovery End User License Agreement

NOTICE TO USERS

CAREFULLY READ THE FOLLOWING LEGAL AGREEMENT. USE OF THE SOFTWARE PROVIDED WITH THIS AGREEMENT (THE "SOFTWARE") CONSTITUTES YOUR ACCEPTANCE OF THESE TERMS. IF YOU DO NOT AGREE TO THE TERMS OF THIS AGREEMENT, DO NOT INSTALL AND/OR USE THIS SOFTWARE. USER'S USE OF THIS SOFTWARE IS CONDITIONED UPON COMPLIANCE BY USER WITH THE TERMS OF THIS AGREEMENT.

1. LICENSE GRANT

Eassos Tech. Co., Ltd. grants you a license to use one copy of the version of this SOFTWARE on any one system for as many licenses as you purchase. "You" means the company, entity or individual whose funds are used to pay the license fee. "Use" means storing, loading, installing, executing or displaying the SOFTWARE. You may not modify the SOFTWARE or disable any licensing or control features of the SOFTWARE except as an intended part of the SOFTWARE's programming features. This license is not transferable to any other system, or to another organization or individual. You are expected to use the SOFTWARE on your system and to thoroughly evaluate its usefulness and functionality before making a purchase. This "try before you buy"

approach is the ultimate guarantee that the SOFTWARE will perform to your satisfaction; therefore, you understand and agree that there is no refund policy for any purchase of the SOFTWARE.

2. OWNERSHIP

The SOFTWARE is owned and copyrighted by Eassos Tech. Co., Ltd. Your license confers no title or ownership in the SOFTWARE and should not be construed as a sale of any right in the SOFTWARE.

3. COPYRIGHT.

The SOFTWARE is protected by copyright law and international treaty provisions. You acknowledge that no title to the intellectual property in the SOFTWARE is transferred to you. You further acknowledge that title and full ownership rights to the SOFTWARE will remain the exclusive property of Eassos Tech. Co., Ltd. and you will not acquire any rights to the SOFTWARE except as expressly set forth in this license. You agree that any copies of the SOFTWARE will contain the same proprietary notices which appear on and in the SOFTWARE.

4. REVERSE ENGINEERING

You agree that you will not attempt to reverse compile, modify, translate, or disassemble the SOFTWARE in whole or in part.

5. NO OTHER WARRANTIES

EASSOS TECH. CO., LTD. DOES NOT WARRANT THAT THE SOFTWARE IS ERROR FREE. EASSOS TECH. CO., LTD. DISCLAIMS ALL OTHER WARRANTIES WITH RESPECT TO THE SOFTWARE, EITHER EXPRESS OR IMPLIED, INCLUDING BUT NOT LIMITED TO IMPLIED WARRANTIES OF MERCHANTABILITY, FITNESS FOR A PARTICULAR PURPOSE AND NONINFRINGEMENT OF THIRD-PARTY RIGHTS. SOME JURISDICTIONS DO NOT ALLOW THE EXCLUSION OF IMPLIED WARRANTIES OR LIMITATIONS ON HOW LONG AN IMPLIED WARRANTY MAY LAST, OR THE EXCLUSION OR LIMITATION OF INCIDENTAL OR CONSEQUENTIAL DAMAGES, SO THE ABOVE LIMITATIONS OR EXCLUSIONS MAY NOT APPLY TO YOU. THIS WARRANTY GIVES YOU SPECIFIC LEGAL RIGHTS AND YOU MAY ALSO HAVE OTHER RIGHTS WHICH VARY FROM JURISDICTION TO JURISDICTION.

6. SEVERABILITY

In the event of invalidity of any provision of this license, the parties agree that such invalidity shall not affect the validity of the remaining portions of this license.

7. NO LIABILITY FOR CONSEQUENTIAL DAMAGES

IN NO EVENT SHALL EASSOS TECH. CO., LTD. OR ITS SUPPLIERS BE LIABLE TO YOU FOR ANY CONSEQUENTIAL, SPECIAL, INCIDENTAL OR INDIRECT DAMAGES OF ANY KIND ARISING OUT OF THE DELIVERY, PERFORMANCE OR USE OF THE SOFTWARE, EVEN IF THE AUTHOR OF CuteRecovery HAS BEEN

ADVISED OF THE POSSIBILITY OF SUCH DAMAGES. IN NO EVENT WILL EASSOS TECH. CO., LTD. LIABILITY FOR ANY CLAIM, WHETHER IN CONTRACT, TORT OR ANY OTHER THEORY OF LIABILITY, EXCEED THE LICENSE FEE PAID BY YOU, IF ANY.

8. TERMINATION

Any failure by You to comply with the terms and conditions of this agreement will result in automatic and immediate termination of this agreement including the license hereunder. Upon termination of this agreement for any reason, you agree to immediately cease use of this software and destroy all copies of this software.

9. GOVERNING LAW

This license shall be governed by and interpreted only in accordance with the laws of the People's Republic of China, without reference to conflict of laws principles, and to the maximum extent permitted under applicable law, you expressly waive any rights to the application of any other law or regulation on the effect thereof.

10. ENTIRE AGREEMENT

This is the entire agreement between you and Eassos Tech. Co., Ltd. which supersedes any prior agreement or understanding, whether written or oral, relating to the subject matter of this license.

Technical Support

If you have any question or need any help about CuteRecovery, you can visit our support center for troubleshooting and more user guides:

<https://www.eassos.com/>

Besides, you can contact the technical support team directly via email:

support@eassos.com